



**Hanover Public Schools
Hanover, MA**

School Year 2023-24 Enrollment Projection Report

Copyright, New England School Development Council, 2024

Table of Contents

Section	Page
Enrollment Summary.....	1
Historical Enrollment Table.....	2
Historical Enrollment Graph.....	3
Projected Enrollment Table.....	4
Projected Enrollment Graph.....	5
Historical & Projected Enrollment Graph.....	6
Historical & Projected Enrollment in Grade Combinations Line Graph.....	7
Historical & Projected Enrollment in Grade Combinations Stacked Column Graph.....	8
Birth to Kindergarten Relationship Graph.....	9
Additional Information	10
New England's PK-12 Enrollment Trends.....	11
Methodology, Reliability and Use of this Document.....	12

Enrollment Summary

NESDEC is pleased to send you this report displaying the past, present, and projected enrollments for your District. It is important to update enrollment projections every year to identify changes in enrollment patterns. Ten-year projections are designed to provide your District with yearly, up-to-date enrollment information that can be used by boards and administrators for effective planning and allocation of resources.

Included in this report are graphs representing historical and projected grade-by-grade enrollments, as well as historical and projected enrollments in grade combinations. We received the enrollment data from the District, and we assume that the method of collecting this data has been consistent from year to year.

Enrollment projections are more reliable in Years #1-4 in the future and less reliable in the “out-years.” Projections six to ten years out may serve as a guide to future enrollments and are useful for planning purposes. In light of this, NESDEC has added a “Spring Update Refresher” enrollment projection at no cost to affiliates. For more information, please refer to the Methodology, Reliability and Use of this Document section.

The NESDEC enrollment projection fell within 6 students of the K-12 total, 2,516 students projected vs. 2,510 enrolled.

Births increased by 15 from a previous ten-year average of 122 to a projected average of 137. In most districts, Grades 1-8 are very stable in enrollments. However, there have been increases in 8 of the 8 most recent years, leading to a net increase averaging 16 students per year.

Over the next three years, Grades K-1 enrollments are projected to increase by 31 students, Grades 2-4 enrollments are projected to increase by 18 students, Grades 5-8 enrollments are projected to increase by 60 students, and Grades 9-12 enrollments are projected to decrease by 13 students, as students move through the grades.

Historical Enrollment

School District: Hanover, MA

1/4/2024

Historical Enrollment By Grade																			
Birth Year	Births*	School Year	PK	K	1	2	3	4	5	6	7	8	9	10	11	12	UNGR	K-12	PK-12
2008	118	2013-14	40	157	185	213	170	214	227	207	232	219	194	194	192	195	< 10 **	2602	2642
2009	133	2014-15	51	176	167	189	221	168	214	231	198	235	191	202	203	192	< 10 **	2590	2641
2010	121	2015-16	54	184	186	172	200	216	180	213	228	200	218	188	200	207	< 10 **	2595	2649
2011	125	2016-17	65	187	184	188	172	205	219	180	209	226	179	219	192	198	< 10 **	2560	2625
2012	94	2017-18	65	154	198	189	194	178	214	223	178	216	206	183	216	193	< 10 **	2545	2610
2013	126	2018-19	71	198	171	204	194	204	180	218	220	181	194	209	183	215	< 10 **	2574	2645
2014	127	2019-20	80	198	200	169	207	195	207	185	215	224	172	191	213	190	< 10 **	2569	2649
2015	130	2020-21	52	192	211	204	176	209	197	212	183	216	182	175	188	212	< 10 **	2562	2614
2016	126	2021-22	89	179	201	224	208	181	217	197	217	174	173	183	170	196	< 10 **	2523	2612
2017	124	2022-23	112	180	190	208	228	209	185	216	191	212	150	167	185	170	< 10 **	2496	2608
2018	133	2023-24	118	208	183	193	209	229	210	187	212	191	180	152	173	183	< 10 **	2516	2634

*Birth data provided by Public Health Vital Records Departments in each state.

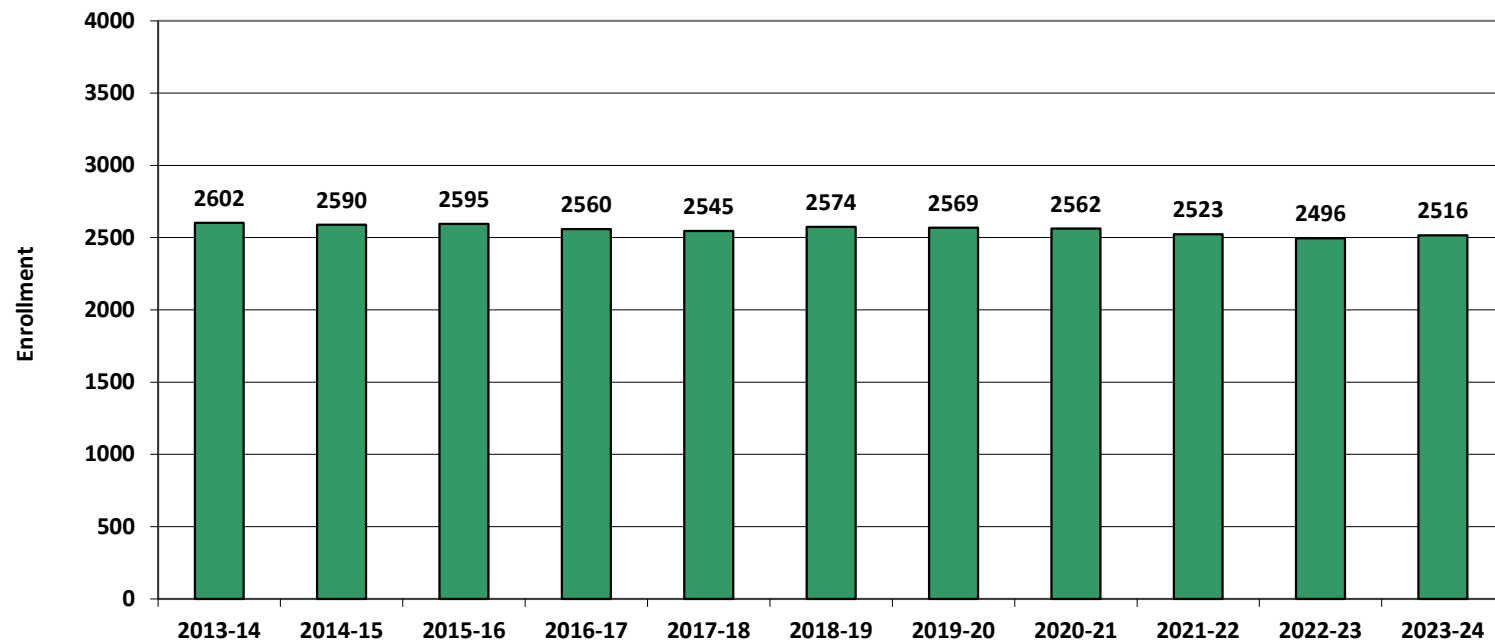
** < 10 Not reported, to protect subgroups with fewer than 10 students.

Historical Enrollment in Grade Combinations									
School Year	PK-4	K-4	K-1	PK-1	2-4	K-8	5-8	5-12	9-12
2013-14	979	939	342	382	597	1824	885	1660	775
2014-15	972	921	343	394	578	1799	878	1666	788
2015-16	1012	958	370	424	588	1779	821	1634	813
2016-17	1001	936	371	436	565	1770	834	1622	788
2017-18	978	913	352	417	561	1744	831	1629	798
2018-19	1042	971	369	440	602	1770	799	1600	801
2019-20	1049	969	398	478	571	1800	831	1597	766
2020-21	1044	992	403	455	589	1800	808	1565	757
2021-22	1082	993	380	469	613	1798	805	1527	722
2022-23	1127	1015	370	482	645	1819	804	1476	672
2023-24	1140	1022	391	509	631	1822	800	1488	688

Historical Percentage Changes			
School Year	K-12	Diff.	%
2013-14	2602		
2014-15	2590	-12	-0.5%
2015-16	2595	5	0.2%
2016-17	2560	-35	-1.3%
2017-18	2545	-15	-0.6%
2018-19	2574	29	1.1%
2019-20	2569	-5	-0.2%
2020-21	2562	-7	-0.3%
2021-22	2523	-39	-1.5%
2022-23	2496	-27	-1.1%
2023-24	2516	20	0.8%
Change		-86	-3.3%

Historical Enrollment

Grades K-12, School Years 2013-14 to 2023-24



Projected Enrollment

School District: Hanover, MA

1/4/2024

Enrollment Projections By Grade*																				
Birth Year	Births*		School Year	PK	K	1	2	3	4	5	6	7	8	9	10	11	12	UNGR	K-12	PK-12
2018	133		2023-24	118	208	183	193	209	229	210	187	212	191	180	152	173	183	< 10 **	2516	2634
2019	142		2024-25	118	210	217	189	197	212	233	212	185	208	162	179	153	175	< 10 **	2538	2656
2020	133	(prov.)	2025-26	118	197	219	224	193	199	216	235	210	182	177	161	180	155	< 10 **	2554	2672
2021	147	(prov.)	2026-27	118	217	205	226	228	195	203	218	233	206	155	176	162	182	< 10 **	2612	2730
2022	130	(prov.)	2027-28	119	192	226	212	230	231	199	205	216	229	175	154	177	164	< 10 **	2616	2735
2023	137	(est.)	2028-29	119	203	200	233	216	233	235	200	203	212	195	174	155	179	< 10 **	2644	2763
2024	138	(est.)	2029-30	119	204	211	207	238	219	237	237	198	200	180	194	175	157	< 10 **	2663	2782
2025	137	(est.)	2030-31	119	203	212	218	211	241	223	239	235	195	170	179	195	177	< 10 **	2704	2823
2026	138	(est.)	2031-32	120	204	211	219	222	214	246	225	237	231	166	169	180	197	< 10 **	2727	2847
2027	136	(est.)	2032-33	120	201	212	218	223	225	218	248	223	233	196	165	170	182	< 10 **	2720	2840
2028	137	(est.)	2033-34	120	203	209	219	222	226	229	220	246	219	198	195	166	172	< 10 **	2730	2850

Note: Ungraded students (UNGR) often are high school students whose anticipated years of graduation are unknown, or students with special needs - UNGR not included in Grade Combinations for 7-12, 9-12, etc.

Based on an estimate of births

Based on children already born

Based on students already enrolled

*Birth data provided by Public Health Vital Records Departments in each state.

** < 10 Not reported, to protect subgroups with fewer than 10 students.

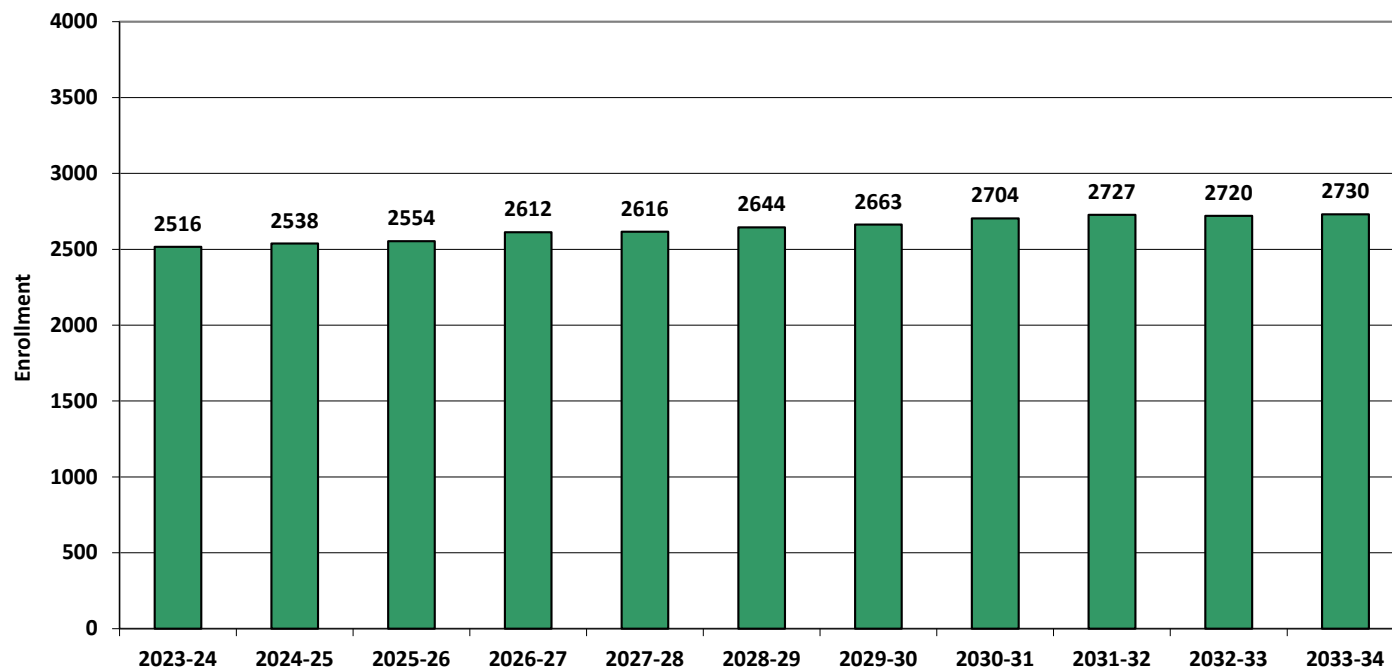
Projected Enrollment in Grade Combinations*									
School Year	PK-4	K-4	K-1	PK-1	2-4	K-8	5-8	5-12	9-12
2023-24	1140	1022	391	509	631	1822	800	1488	688
2024-25	1143	1025	427	545	598	1863	838	1507	669
2025-26	1150	1032	416	534	616	1875	843	1516	673
2026-27	1189	1071	422	540	649	1931	860	1535	675
2027-28	1210	1091	418	537	673	1940	849	1519	670
2028-29	1204	1085	403	522	682	1935	850	1553	703
2029-30	1198	1079	415	534	664	1951	872	1578	706
2030-31	1204	1085	415	534	670	1977	892	1613	721
2031-32	1190	1070	415	535	655	2009	939	1651	712
2032-33	1199	1079	413	533	666	2001	922	1635	713
2033-34	1199	1079	412	532	667	1993	914	1645	731

Projected Percentage Changes			
School Year	K-12	Diff.	%
2023-24	2516		
2024-25	2538	22	0.9%
2025-26	2554	16	0.6%
2026-27	2612	58	2.3%
2027-28	2616	4	0.2%
2028-29	2644	28	1.1%
2029-30	2663	19	0.7%
2030-31	2704	41	1.5%
2031-32	2727	23	0.9%
2032-33	2720	-7	-0.3%
2033-34	2730	10	0.4%
Change	214		8.5%

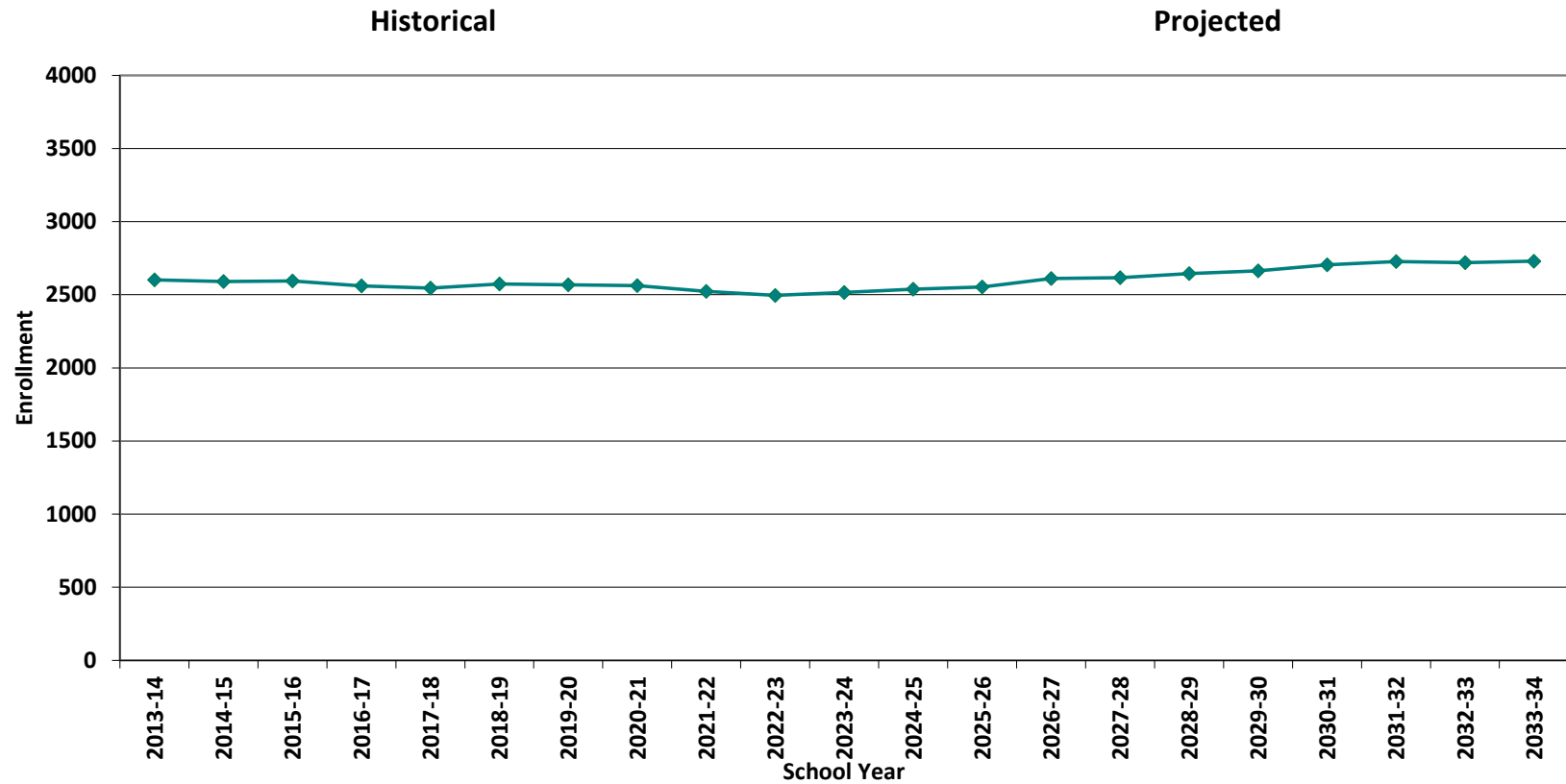
*Projections should be updated annually to reflect changes in in/out-migration of families, real estate sales, residential construction, births, and similar factors.

Projected Enrollment

Grades K-12, School Years 2023-24 to 2033-34



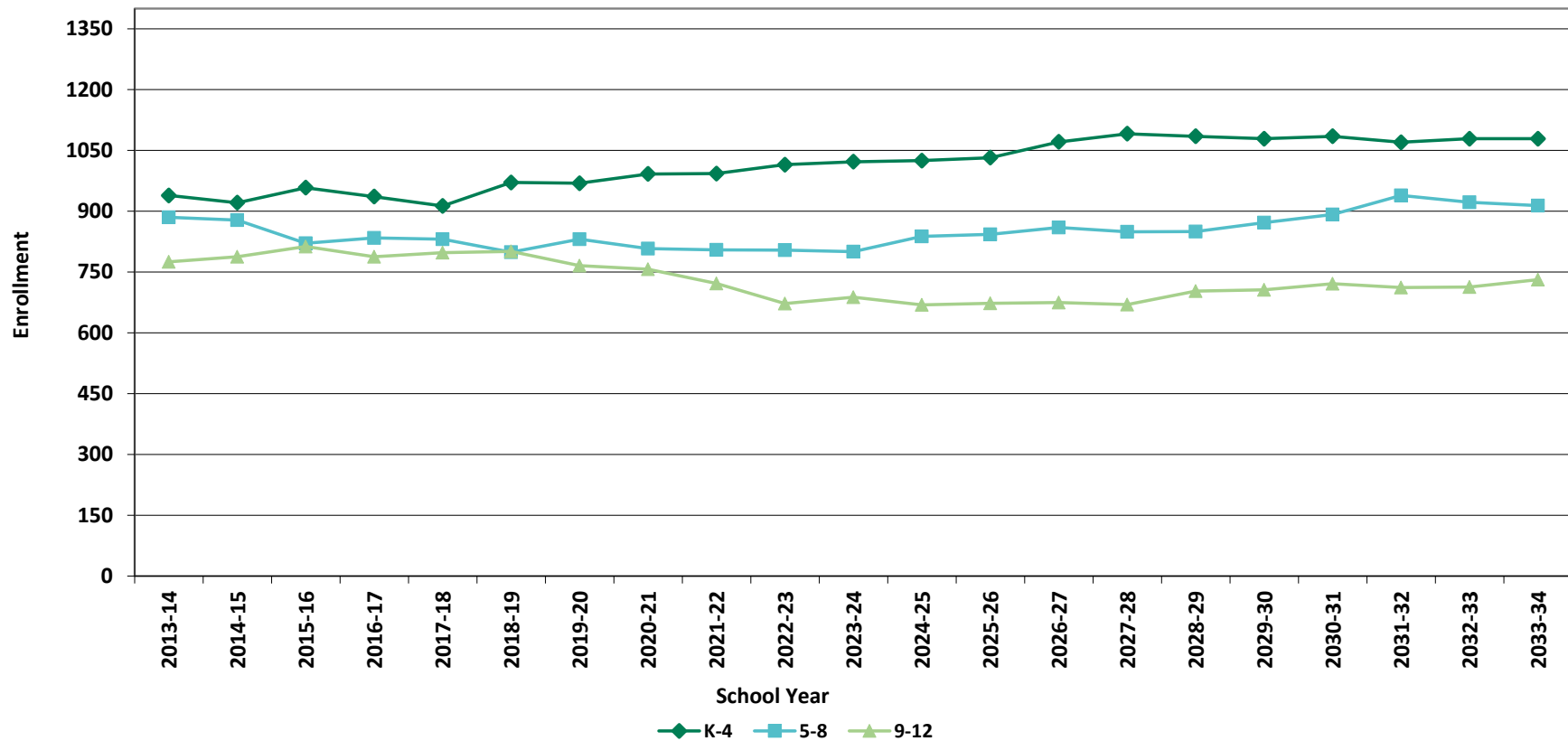
Historical & Projected Enrollment



Historical & Projected Enrollments in Grade Combinations

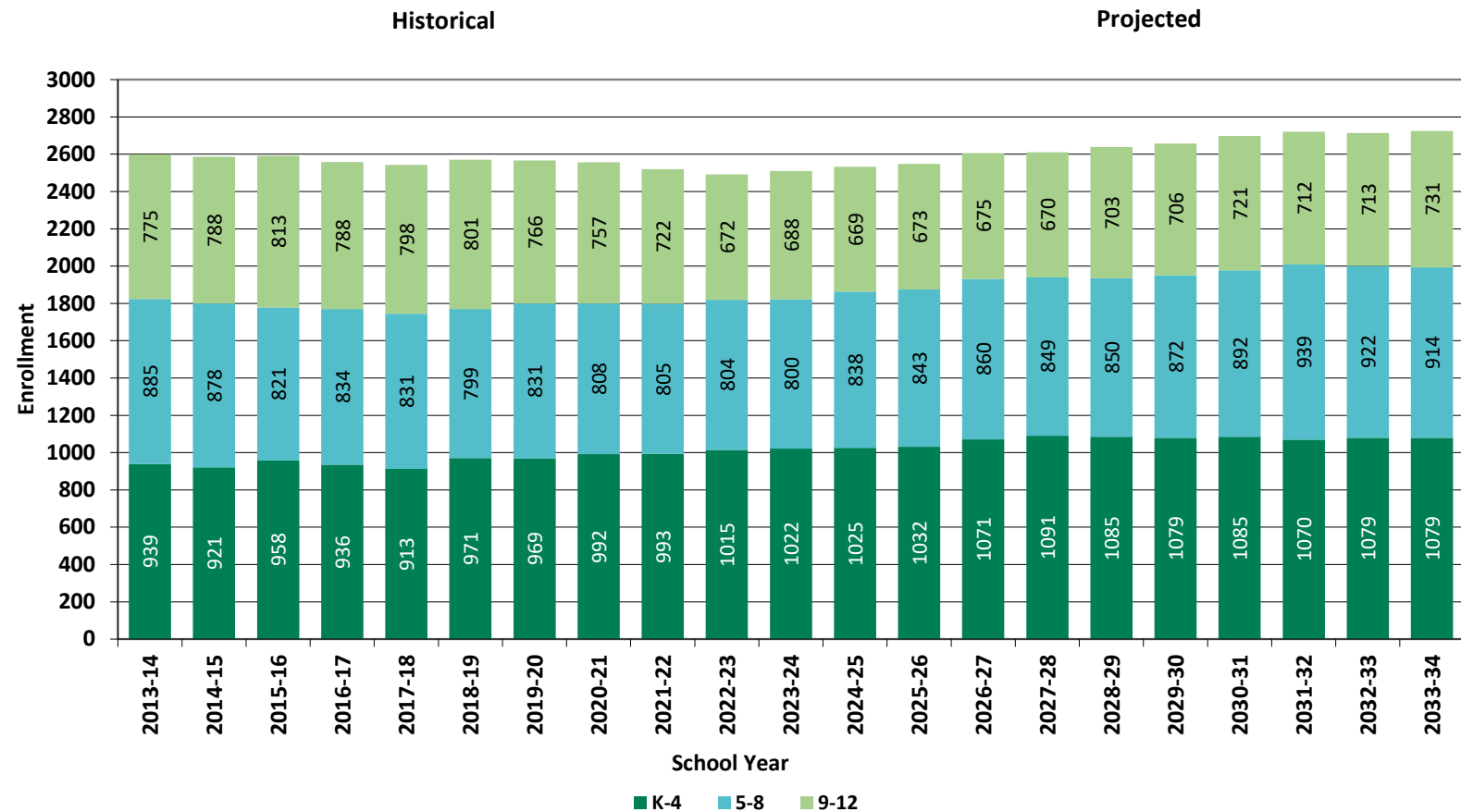
Historical

Projected

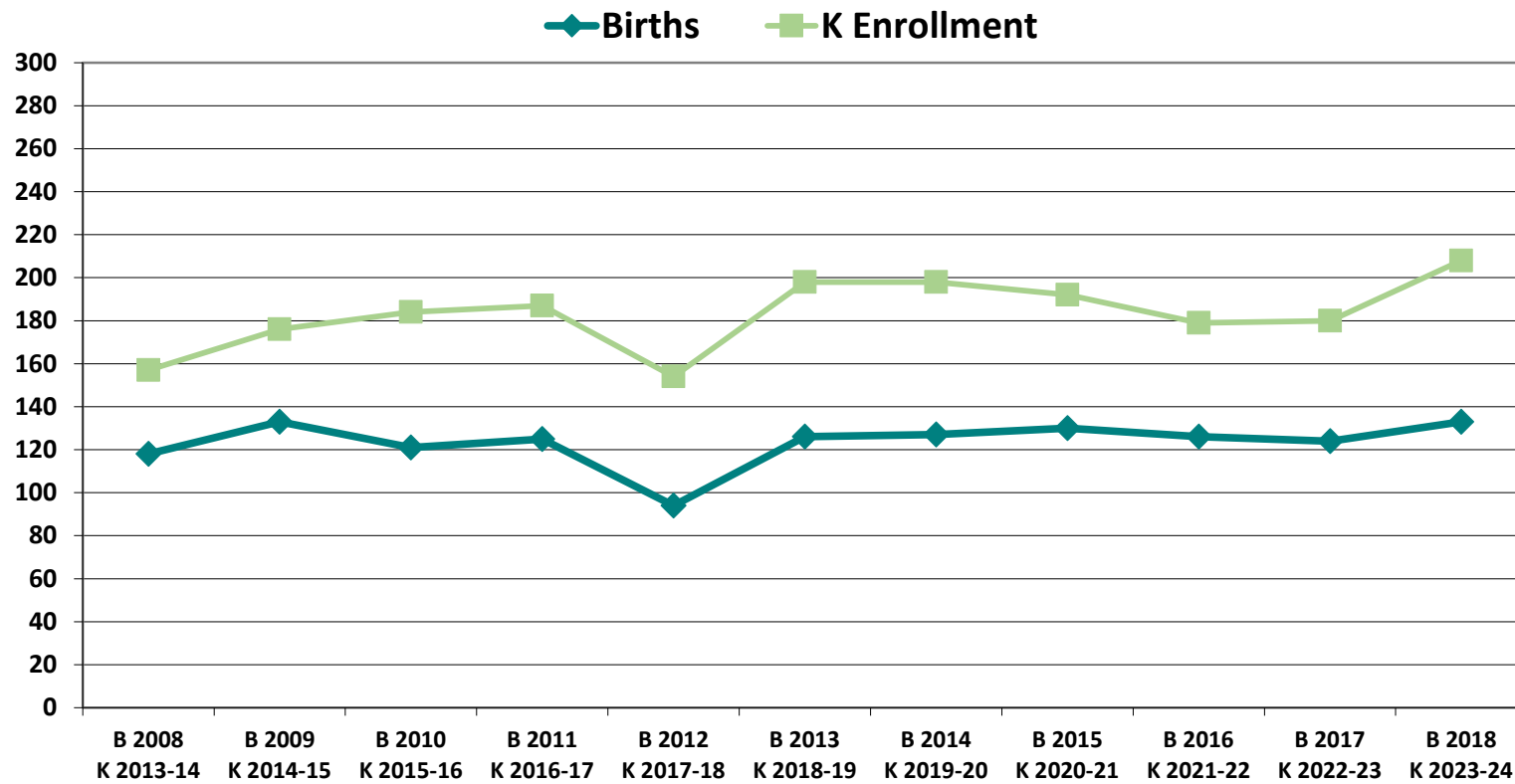




Historical & Projected Enrollments in Grade Combinations



Birth-to-Kindergarten Relationship



Additional Information

Building Permits Issued (Source: HUD)		
Year	Single-Family	Multi-Units
2019	21	0
2020	23	0
2021	9	0
2022	3	0
2023	9 to date	0 to date

School Year	9 - 12 CTE	K - 12 Non-Public	K - 12 Choice-In	K - 12 Choice-Out	K - 12 Out-of-District SPED	K - 12 Homeschool
2019-20	45	114	0	45	22	17
2020-21	57	n/a	0	40	25	26
2021-22	59	0	< 10 **	37	29	22
2022-23	64	164	< 10 **	26	34	14
2023-24	0	0	0	0	34	13

*The above data was provided by the District, with the exception of building permit data (provided by HUD).

"n/a" signifies that information was not provided by District.

** < 10 Not reported, to protect subgroups with fewer than 10 students.

New England's PK-12 Enrollments Trends

From 2021 to 2030, the US Department of Education anticipates changes in PK-12 enrollment of -3.2% in the South, -6.0% in the West, -3.9% in the Midwest, -6.0% in the Northeast, and a total of -4.4% nationwide.

State	Fall 2021 PK - 12	Fall 2030 Projected	PK-12 Decline	% Change 2021-2030
USA	49,452,864	47,252,500	-2,200,364	-4.4%
CT	508,686	475,600	-33,086	-6.5%
ME	173,215	161,800	-11,415	-6.6%
MA	921,180	879,900	-41,280	-4.5%
NH	170,005	144,600	-25,405	-14.9%
RI	138,566	130,200	-8,366	-6.0%
VT	83,975	74,600	-9,375	-11.2%

Source: U.S. Department of Education, National Center for Education Statistics, Enrollment in public elementary and secondary schools, by region, state, and jurisdiction: Selected years, fall 1990 through fall 2030, Table 203.20, March 2023.

Although most New England Districts are seeing a decline in the number of births, NESDEC's experience indicates that the impact on enrollment varies from District to District. Almost half of New England Districts have been growing in PK-12 enrollment, and a similar number are declining (often in rural areas), with the other Districts remaining stable.

Methodology, Reliability and Use of this Document

PROJECTION METHODOLOGY

Cohort component (survival) technique is a frequently used method of preparing enrollment forecasts. NESDEC uses this method, but modifies it in order to move away from forecasts that are wholly computer- or formula-driven. Such modification permits the incorporation of important, current district-specific demographic information into the generation of enrollment forecasts (such as in/out-migration of students, resident births, HUD-reported building permits, etc.). Percentages are calculated from the historical enrollment data to determine a reliable percentage of increase or decrease in enrollment between any two grades. For example, if 100 students enrolled in Grade 1 in 2022-23 increased to 104 students in Grade 2 in 2023-24, the percentage of survival would be 104%, or a ratio of 1.04. Ratios are calculated between each pair of grades or years in school over several recent years.

After study and analysis of the historical ratios, and based upon a reasonable set of assumptions regarding births, migration rates, retention rates, etc., ratios most indicative of future growth patterns are determined for each pair of grades. The ratios thus selected are applied to the present enrollment statistics to project into future years. The ratios are the key factors in the reliability of the projections, assuming validity of the data at the starting point.

RELIABILITY OF ENROLLMENT PROJECTIONS

Projections can serve as useful guides to school administrators for educational planning. Enrollment projections are more reliable in Years #1-4 in the future and less reliable in the "out-years." Projections six to ten years out may serve as a guide to future enrollments and are useful for planning purposes, but they should be viewed as subject to change given the likelihood of potential shifts in underlying assumptions/trends, such as student migration, births as they relate to Kindergarten enrollment, and other factors.

Projections that are based upon **the children who already are in the district** (the current K-12 population only) will be the most reliable. The second level of reliability will be for those children already **born into the community but not yet old enough to be in school**. The least reliable category is the group for which an estimate must be made **to predict the number of births**, thereby adding additional uncertainty. See these three multi-colored groupings on the "Projected Enrollment" tab.

Annual updates allow for early identification of recent changes in historical trends. When the actual enrollment in a grade is significantly different (higher or lower) from the projected number, it is important (yet difficult) to determine whether this is a one-year aberration or whether a new trend may have begun. **In light of this possibility, NESDEC urges all school districts to have updated enrollment forecasts developed by NESDEC each October.** This service is available at no cost to affiliated school districts.

USING THIS INFORMATION ELECTRONICALLY

If you would like to extract the information contained in this report for your own documents or presentations, you can use screenshots, which can be inserted into PowerPoint slides, Word documents, etc. Because screenshots create graphics, the image is not editable. Please feel free to contact us if you need assistance in this matter, by phone (508-481-9444) or by email (ep@nesdec.org).