



Town of Hanover, Massachusetts
Hanover High School



PMA Construction Services
Owner's Project Manager

HANOVER HIGH SCHOOL PROJECT *August 2011 – Monthly Status Report*

Project:	Hanover High School	Building Size:	157,000	Ph1 Substantial Completion:	June 2011
Current Phase:	Construction	Enrollment Projection:	800 Students	Ph2 Substantial Completion:	May 2012
Construction Type:	NEW	Facility Type:	High School	Project Total Duration:	32-months
Construction Start Date:	28Sep09	Reimbursement Rate:	48.21%		

Project Safety Report

Safety Incidents this Month • [0]
Past Lost Time Incidents • [1]
Past Minor Reportable Incidents • [2]

Open Scope / Potential Issues

- Security System Completion
- HVAC Graphic BMS
- Replace Data Floor Boxes
- RTU Programing
- Data Progress and Manpower
- Final FFE Delivery/Installs
- Telephone, Network and Security Vendor Coordination
- Complete Roof Edge Metal
- Commissioning Coordination
- Phase 1 and 1A Punch List
- Bus Loop Construction Progress
- Existing Building Demo
- Owner Training
- Front Entrance Architectural Stone Wall
- Community Issues – None at This Time.

Budget Status

Total Project Budget: \$50,070,968 as of 9/01/11
Actual Incurred to Date: \$44,647,997 as of 9/01/11 (89%)
Contingency Remaining: \$83,503.16 (3.18%)

Construction Cost Summary:

Award Value (Callahan):	\$38,652,255.00
Previously Executed CO's (Net)	\$1,572,294.87
Previous Contract Value:	\$40,224,549.87
CO's Executed this Month:	\$0.00
Current Contract Value:	\$40,224,549.87

Construction Payment Summary:

Previous Gross Amount:	\$35,639,913.38
This Month's Gross Amount:	\$2,023,923.87
Gross Amount to-Date:	\$37,663,837.25
Retainage To-Date @ 5%:	\$1,883,191.86
Retainage Released	-\$875,366.88
Current Retainage	\$1,007,824.98
Total Net Payable To-Date:	\$36,656,012.27

Remaining Balance to Finish

(gross):	\$2,560,712.62
-----------------	-----------------------

Project Status

August 2011 Progress

- | | |
|---------------------------------------------------------------------------------------------------------------------------------------------------------------------------------------------------------------------------------------------------------------------------------------------------------------------------------------------------------------------------------------------------------------------|--------------------------------------------------------------------------------------------------------------------------------------------------------------------------------------------------------------------------------------------------------------------------------------------------------------------------------|
| <ul style="list-style-type: none"> • PMA Performed OPM Duties (i.e. contract document compliance verification, project controls, real-time issues ID and resolution) • Designer Continued Construction Administration (i.e. submittals, RFIs, weekly site visits, QA/QC, etc) • Building Final Clean • Bioclere System Started • Building Substantial Completion | <ul style="list-style-type: none"> • Passed Auditorium FA Test • Completed Field Speaker Install • Exterior Doors Alarmed • Started PV System • Auditorium Projector Installed • Building Commissioning Continued • Completed Existing Building Abatement |
|---------------------------------------------------------------------------------------------------------------------------------------------------------------------------------------------------------------------------------------------------------------------------------------------------------------------------------------------------------------------------------------------------------------------|--------------------------------------------------------------------------------------------------------------------------------------------------------------------------------------------------------------------------------------------------------------------------------------------------------------------------------|

September 2011 Forecasted Items

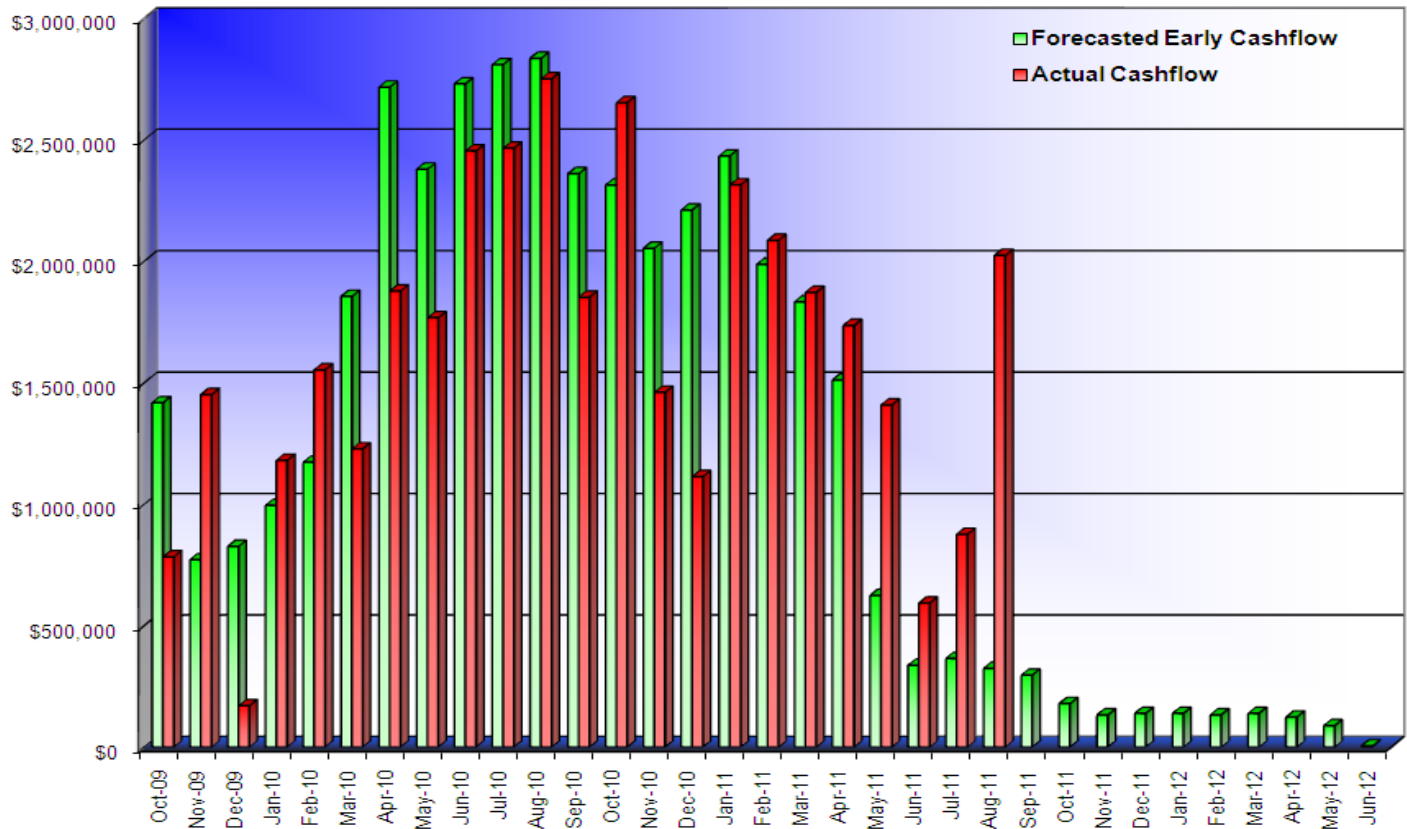
- | | |
|--------------------------------------------------------------------------------------------------------------------------------------------------------------------------------------------------------------------------------------------------------------------|----------------------------------------------------------------------------------------------------------------------------------------------------------------------------------------------------------------------------------------------------------------------------------------------------------------------|
| <ul style="list-style-type: none"> • Complete Existing Building Demo • Complete Ph1 & 1A Punch List • Certificate of Occupancy • Complete Security • FFE Punch List • Complete Photovoltaic System | <ul style="list-style-type: none"> • Continue PhII Architectural Stonewall • Start Backfilling Existing Building Footprint • Continue Installing Bus Loop Curbing • Complete Tennis Benches • Complete Roof Edge Metal • Continue Building Commissioning |
|--------------------------------------------------------------------------------------------------------------------------------------------------------------------------------------------------------------------------------------------------------------------|----------------------------------------------------------------------------------------------------------------------------------------------------------------------------------------------------------------------------------------------------------------------------------------------------------------------|



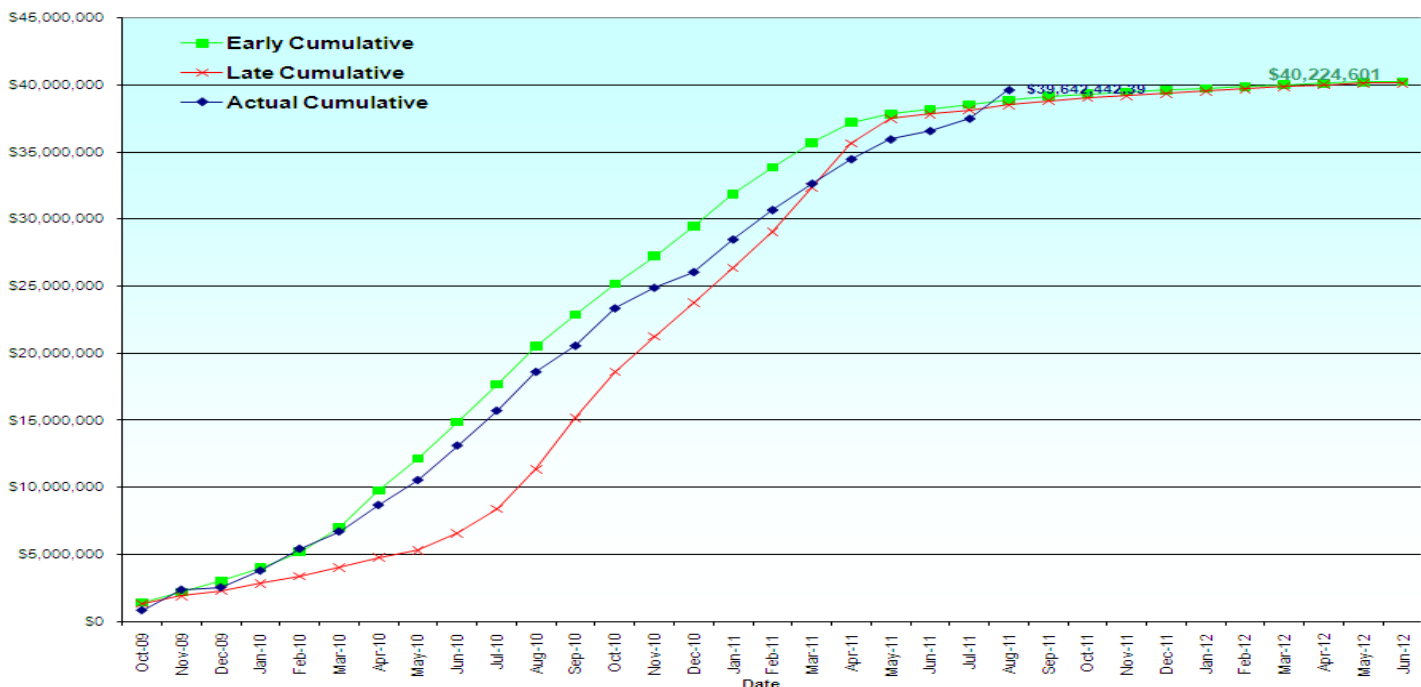
Town of Hanover, Massachusetts
Hanover High School

PMA Construction Services
Owner's Project Manager

Monthly Cashflow Projection



Cumulative Cashflow Projection



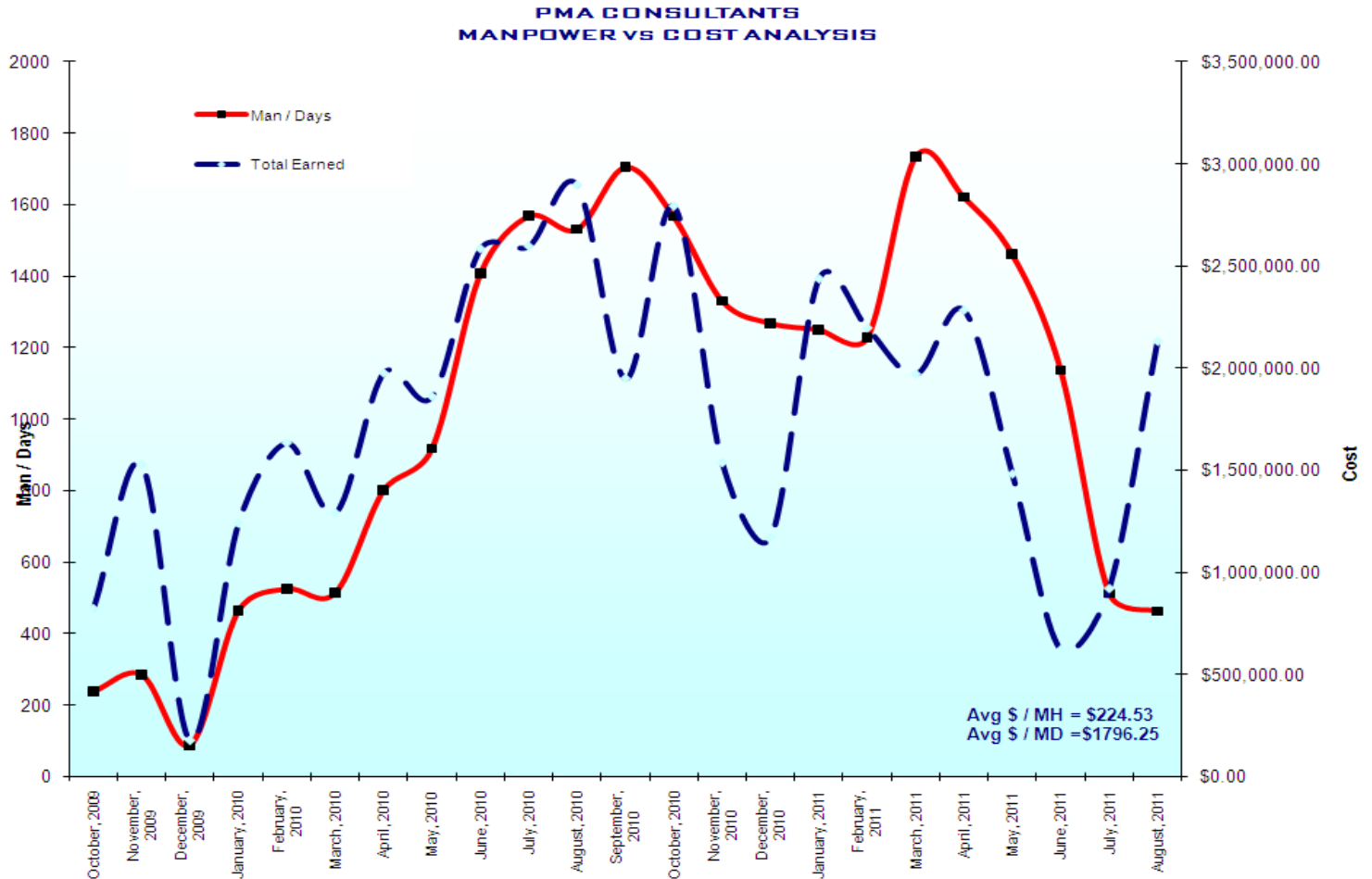


Town of Hanover, Massachusetts
Hanover High School



PMA Construction Services
Owner's Project Manager

Manpower vs Cost Analysis



Milestone Dates				
Milestone Dates	Forecast	Actual	Status	Schedule Notes
Construction Start - NTP		28-Sep-09	✓	
Receive Demo Permit		11-Aug-11	✓	
Complete Move Unpacking/FFE		12-Aug-11	✓	
Start Demo		15-Aug-11	✓	
Substantial Completion		15-Aug-11	✓	
Complete Auditorium		19-Aug-11	✓	
Complete Gymnasium		29-Aug-11	✓	
Complete Abatement	6-Sep-11			On Schedule
Complete Demo	30-Sep-11			On Schedule
Complete Punch List	21-Oct-11			On Schedule



Massachusetts School Building Authority



Town of Hanover, Massachusetts

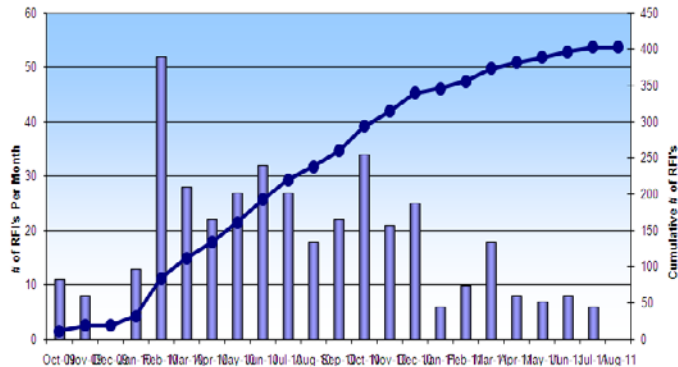
Hanover High School

PMA Construction Services

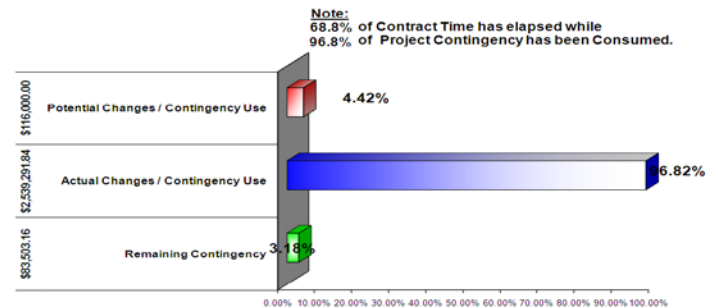
Owner's Project Manager

Graphs & Data

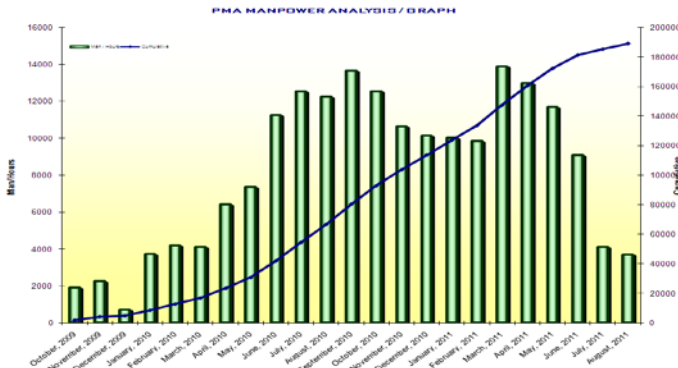
Requests for Information (RFIs)



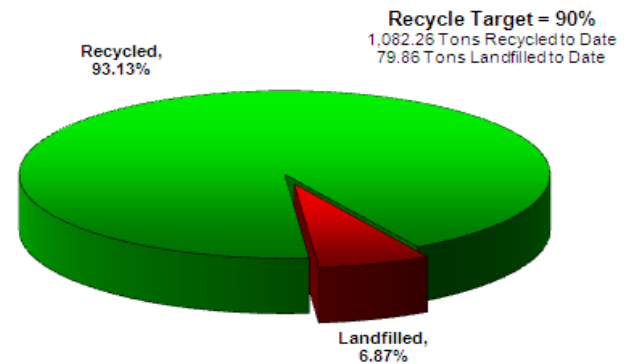
Contingency Utilization



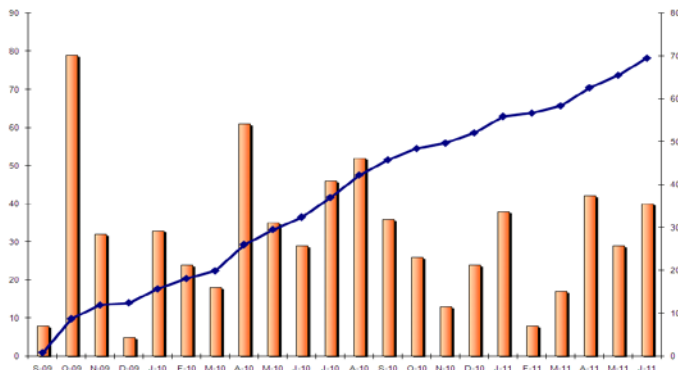
Monthly Manpower



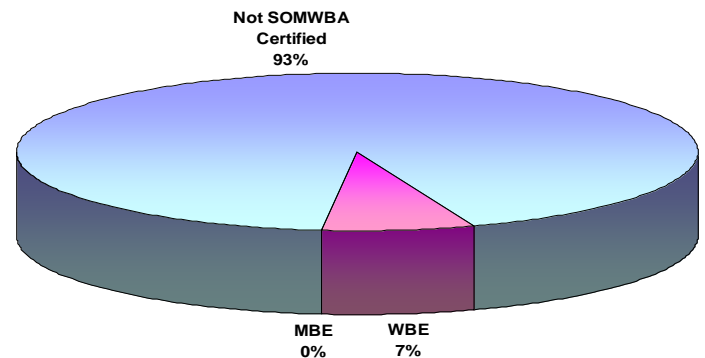
MA-CHPS Waste Management



Economic Impact – Work Force Employed To-Date



MBE / WBE Participation



PMA Change Management

	Received	Description	Proposed Amount (\$)	Pending Amount	Approved Amount (\$)	Time Extension (Y/N)	Current Status
		Total	\$308,882.00	\$297,816.00	\$1,572,345.84		
PCO #087	1/22/2011	Tile Alignment & Transition	\$9,162.00	\$9,162.00		N	Open
PCO #089	7/3/2011	Pump Chamber	\$15,661.00	\$15,661.00		N	Open
PCO #100	3/5/2011	Added Diffuser & Insulation per RFI#349	\$2,634.00	\$2,026.36		N	Open
PCO #107	4/14/2011	Bedrock Irrigation Vell per ASI #23 and 33	\$31,494.00	\$31,494.00		N	Open
PCO #117	8/16/2011	Door Hardware Changes per RFI#380	\$12,306.00	\$12,306.00		N	Open
PCO #119	4/25/2011	Added Row of Snow Guards	\$4,385.00	\$4,385.00		N	Open
PCO #120	7/2/2011	Added Disconnects CCD #15	\$10,935.00	\$10,935.00		N	Open
PCO #122	6/19/2011	Revisions per CCD #10	\$7,708.00	\$7,708.00		N	Open
PCO #124	8/29/2011	Mat Mover Relocation CCD #22	\$25,709.00	\$25,709.00		N	Open
PCO #128	8/12/2011	Smoke Dampers per CCD #13 and RFI#380	\$26,372.00	\$26,372.00		N	Open
PCO #129	8/12/2011	Painting Flex Heads	\$3,147.00	\$3,147.00		N	Open
PCO #130	6/4/2011	Misc Griffin	\$9,301.00	\$9,301.00		N	Open
PCO #131	6/20/2011	Cafe Light Fixture per ASI #87	\$4,534.00	\$4,534.00		N	Open
PCO #132	8/2/2011	Concrete Water Tank Insulation	\$2,385.00	\$2,385.00		N	Open
PCO #133	8/2/2011	Moisture Mitigation per CCD #27	\$27,581.00	\$27,581.00		N	Open
PCO #134	8/12/2011	Concessions FA per CCD #12	\$22,160.00	\$22,160.00		N	Open
PCO #135	7/16/2011	Epoxy Floor at Maintenance per CCD #28	\$10,497.00	\$10,497.00		N	Open
PCO #136	7/24/2011	Misc Added Carpentry	\$6,978.00	\$6,978.00		N	Open
PCO #137	7/24/2011	Cut and Patch Auditorium per CCD #17	\$4,599.00	\$4,599.00		N	Open
PCO #142	8/12/2011	Gas Solenoid Valve per CCD #21	\$10,218.00	\$10,218.00		N	Open
PCO #143	8/12/2011	Added Drip pan B129	\$884.00	\$884.00		N	Open
PCO #147	5/24/2011	Courtyard Path per CCD #34	\$10,355.00	\$10,355.00		N	Open
PCO #149	8/26/2011	Aluminum Thresholds	\$7,923.00	\$7,923.00		N	Open



Town of Hanover, Massachusetts
Hanover High School

PMA Construction Services
Owner's Project Manager

Progress Photos

Existing High School Demo



Baseball Field



South Parking Lot Final Pave



ENO Board Display



South Architectural Feature Wall



Stage Construction

