



Town of Hanover, Massachusetts
Hanover High School



PMA Construction Services
Owner's Project Manager

HANOVER HIGH SCHOOL PROJECT ***February 2010 – Monthly Status Report***

Project:	Hanover High School	Building Size:	157,000	Ph1 Substantial Completion:	June 2011
Current Phase:	Construction	Enrollment Projection:	800 Students	Ph2 Substantial Completion:	May 2012
Construction Type:	NEW	Facility Type:	High School	Project Total Duration:	32-months
Construction Start Date:	28Sep09	Reimbursement Rate:	48.21%	Day 153 of 611 to Ph1 Substantial:	20.9%

Project Issues/Concerns

- Finalize Cost Extras Associated with Stop Work Order
- Bldg Envelope Material Submittals / Approvals
- Building Façade Mockup – Brick Type & Color Selection
- Loam Stockpile Will Prevent Ph1A (Track & Field) Early Completion, GC Trying to Relocate on Site
- Structural Steel Delivery Schedule
- Utility Coordination (Electric & Data)
- General Material Submittals / Approvals
- CORI Process and Approval Period
- Implementing Schedule Saving Ideas Such as:
 - Early Site Packages/Utility work
 - Double Shifts / Weekend Work
- Reviewing Schedule Saving Ideas Such as:
 - Early Partial Abatement of Existing Building
 - Stored Materials

Budget Status

Total Project Budget: \$50,076,069* as of 2/28/10
Actual Incurred to Date: \$7,601,126 as of 2/28/10 (15.2%)
Contingency Remaining: \$2,579,044 (98%)

**Subject to Final Revised PFA Agreement*

Construction Cost Summary:

Award Value (Callahan):	\$38,652,255.00
Previously Executed CO's (Net)	\$0.00
Previous Contract Value:	\$38,652,255.00
CO's Executed this Month:	\$0.00
Current Contract Value:	\$38,652,255.00

Construction Payment Summary:

Previous Gross Amount:	\$3,772,024.00
This Month's Gross Amount:	\$1,634,016.00
Gross Amount to-Date:	\$5,406,040.00
Retainage To-Date @ 5%:	\$270,302.00
Retainage Released	\$0.00
Current Retainage	\$270,302.00
Total Net Payable To-Date:	\$5,135,738.00

Remaining Balance to Finish (gross):	\$33,246,215.00
---------------------------------------------	------------------------

Project Status

February 2010 Progress

- Structural Steel ~40% Erected, Detailing & Metal Deck Placement Underway
- Foundations ~98% Complete (Incl. Waterproofing, Insulation, Backfill & Compaction)
- UG Plumbing Approximately 70% Complete & Backfilled
- UG Electric Conduit Approximately 65% Installed
- Site Drainage System Installation Underway.

March 2010 Forecasted Items

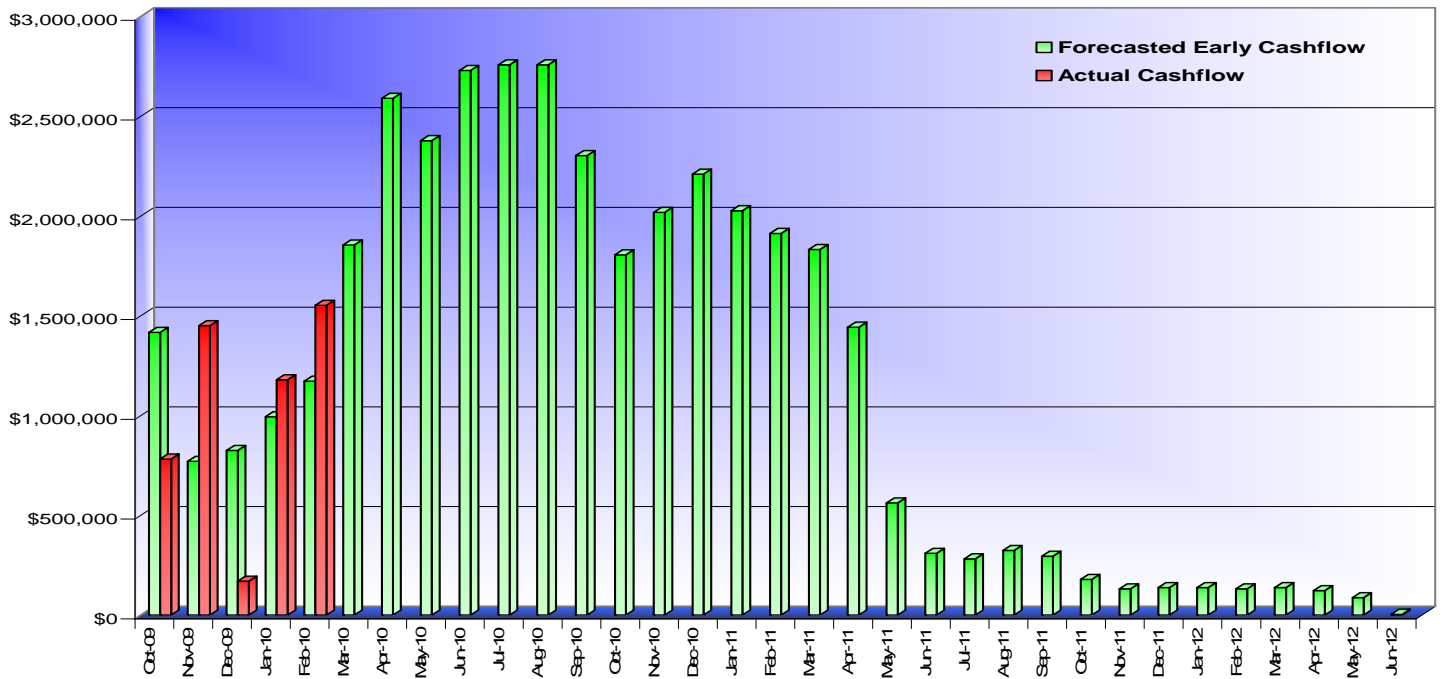
- | | |
|---------------------------------------------------------------------------------------------------------------------------------------------------------------------------------------------------------------------------------------------------------------------------------------------------------------------------------------------------------------------------------------|-----------------------------------------------------------------------------------------------------------------------------------------------------------------------------------------------------------------------------------------------------------------------------------------------------------------------------------------------------------|
| <ul style="list-style-type: none"> • Continue Erecting Structural Steel @ North 1/2 of Bldg • Continue Steel Detailing & Decking Installation • Begin Slab on Deck Placement • Continue Installation of Underground Plumbing • Continue Installation of Underground Electric • Continue Installation of Site Drainage | <ul style="list-style-type: none"> • Continue Structural Material Fabrication / Delivery • Complete Foundation Placement • Complete Foundation Backfill & Compaction • Begin Outbuilding Envelopes • Install Utility Ductbank from Cedar Street to Bldg • Review & Process Invoice #5 |
|---------------------------------------------------------------------------------------------------------------------------------------------------------------------------------------------------------------------------------------------------------------------------------------------------------------------------------------------------------------------------------------|-----------------------------------------------------------------------------------------------------------------------------------------------------------------------------------------------------------------------------------------------------------------------------------------------------------------------------------------------------------|



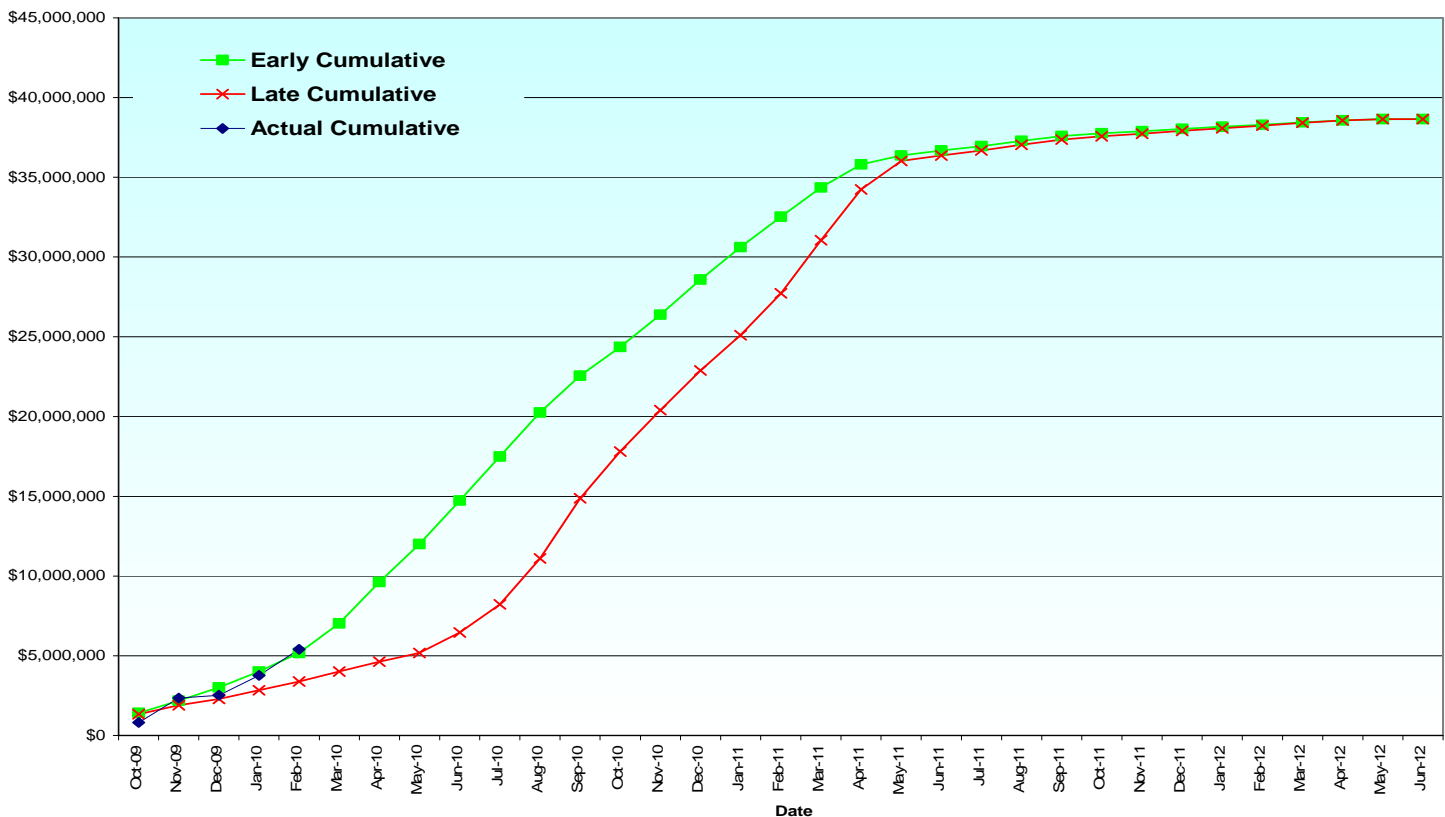
Town of Hanover, Massachusetts
Hanover High School

PMA Construction Services
Owner's Project Manager

Monthly Cashflow Projection



Cumulative Cashflow





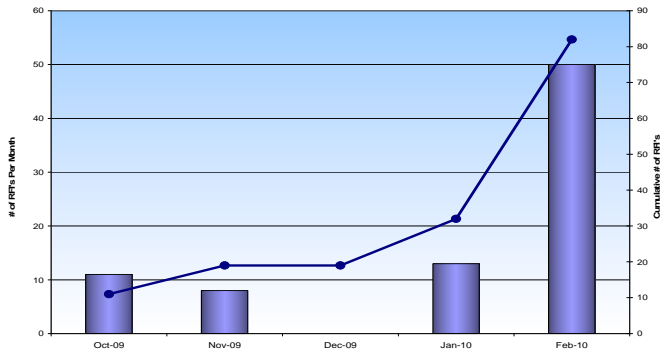
Town of Hanover, Massachusetts
Hanover High School



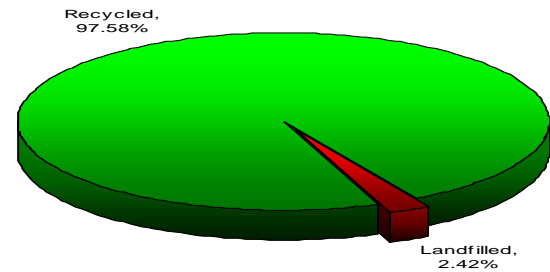
PMA Construction Services
Owner's Project Manager

Graphs & Data

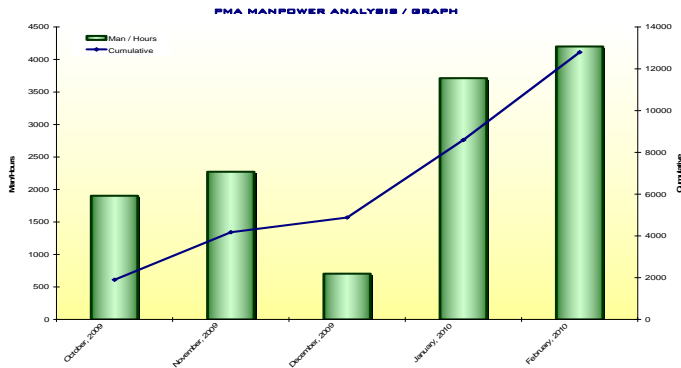
Requests for Information (RFIs)



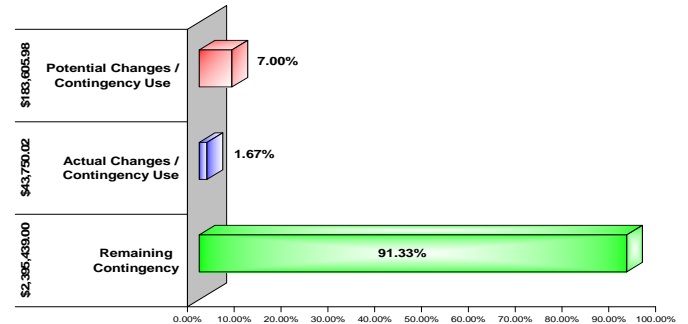
MA-CHPS Waste Management (90% Target)



Monthly Manpower



Contingency Utilization



Milestone Dates

Milestone Dates	Baseline	Forecast	Actual	Status	Schedule Notes
Construction Start - NTP	01Oct09		28Sep09	✓	On Schedule
Foundation Placement Start Milestone	09Nov09		30Oct09	✓	On Schedule
UG MEP Work	15Jan10		20Jan10	✓	Delayed Due to Injunction
Steel Erection Start Milestone	04Jan10		02Feb10	✓	Delayed Due to Injunction
OH MEP Work Start Milestone	20Apr10	30Apr10	6040		Not on Primary Critical Path (Final Site Improvements are Critical)
Building Envelope Start Milestone	28Apr10	07May10	4840		Not on Primary Critical Path (Final Site Improvements are Critical)
Bldg Interior Start Milestone (Layout & Control)	31Mar10	12Apr10	6000		Not on Primary Critical Path (Final Site Improvements are Critical)
Ph1 Substantial Completion	01Jun11	01Jun11	10600		

HS03 Schedule Submission

Contract Milestone Analysis

Phase	Contract	HS00	HS03	Float
Ph1 Substantial	01Jun11	01Jun11	01Jun11	0
Ph1A Substantial	01Jun11	01Jun11	11Oct10	165
Ph2 Substantial	01May12	01May12	01May12	0

- Schedule recovery techniques were implemented in Callahan's HS02 (January) Schedule Update to mitigate the delay caused by the stop work order. Callahan's HS03 schedule submission maintains an anticipated on-time completion for all contract milestones.
- The primary Critical Path to Ph1 Substantial Completion currently runs through the winter 2010-2011 weather constraint to final site improvements.
- The secondary Critical Path (true critical path) to Ph1 Substantial Completion currently flows through the material submittal process, bldg enclosure, interior fit-out, equipment start-up, and testing/inspections. This path is currently showing 12 days of Total Float.



Town of Hanover, Massachusetts
Hanover High School

PMA Construction Services
Owner's Project Manager

Progress Photos

Water Main Installation @ North of Bldg



Maintenance Bldg Foundation



Structural Steel Seq 1-9 (View from West)



Steel Decking – Sequence 2 & 5



Structural Steel & Decking (View from SW Corner)



UG Electrical Conduit Installation

