



**Town of Hanover, Massachusetts**  
Hanover High School



**PMA Construction Services**  
Owner's Project Manager

## **HANOVER HIGH SCHOOL PROJECT** *July 2011 – Monthly Status Report*

<b>Project:</b>	Hanover High School	<b>Building Size:</b>	157,000	<b>Ph1 Substantial Completion:</b>	June 2011
<b>Current Phase:</b>	Construction	<b>Enrollment Projection:</b>	800 Students	<b>Ph2 Substantial Completion:</b>	May 2012
<b>Construction Type:</b>	NEW	<b>Facility Type:</b>	High School	<b>Project Total Duration:</b>	32-months
<b>Construction Start Date:</b>	28Sep09	<b>Reimbursement Rate:</b>	48.21%		

### **Project Safety Report**

Safety Incidents this Month • [0]  
Past Lost Time Incidents • [1]  
Past Minor Reportable Incidents • [2]

### **Open Scope / Potential Issues**

- Owner Occupancy
- Phase 1 and 1A Punch List
- Auditorium Completion
- Equipment Startups, Testing and Owner Training
- Data Progress and Manpower
- FF&E/Mover/IT Install and Punch List
- Telephone, Network and Security Vendor Coordination
- Complete Roof Edge Metal
- Commissioning Coordination
- Computer Distribution/Programming
- Bus Loop Construction Progress
- Existing Building Demo Permit
- Equipment Startups, Testing and Owner Training
- Front Entrance Architectural Stone Wall
- Community Issues – None at This Time.

### **Budget Status**

**Total Project Budget:** \$50,077,345 as of 8/01/11  
**Actual Incurred to Date:** \$41,768,820 as of 8/01/11 (85%)  
**Contingency Remaining:** \$83,503.16 (3.18%)

### **Construction Cost Summary:**

Award Value (Callahan):	\$38,652,255.00
Previously Executed CO's (Net)	\$1,489,862.88
Previous Contract Value:	\$40,142,117.88
CO's Executed this Month:	\$82,483.00
<b>Current Contract Value:</b>	<b>\$40,224,600.88</b>

### **Construction Payment Summary:**

Previous Gross Amount:	\$35,967,058.19
This Month's Gross Amount:	\$875,400.32
Gross Amount to-Date:	\$36,842,458.51
Retainage To-Date @ 5%:	\$1,842,122.93
Retainage Released	-\$40,553.58
Current Retainage	\$1,801,569.35
<b>Total Net Payable To-Date:</b>	<b>\$35,040,889.16</b>

### **Remaining Balance to Finish**

<b>(gross):</b>	<b>\$3,382,142.37</b>
-----------------	-----------------------

### **Project Status**

#### **July 2011 Progress**

- |  |  |
|--|--|
| <ul style="list-style-type: none"> <li>• PMA Performed OPM Duties (i.e. contract document compliance verification, project controls, real-time issues ID and resolution)</li> <li>• Designer Continued Construction Administration (i.e. submittals, RFIs, weekly site visits, QA/QC, etc)</li> <li>• Building Cleaning Ongoing</li> <li>• Completed Building Rubber Flooring</li> <li>• Completed Auditorium Seating</li> </ul> | <ul style="list-style-type: none"> <li>• Admin, 2B and 3B Temp Occupancy</li> <li>• Building Computers Delivered</li> <li>• Wireless Internet Installed</li> <li>• FFE Delivered and Installed</li> <li>• ENO Boards Installed</li> <li>• Building Commissioning Continued</li> <li>• Above Stage Equipment Completed</li> </ul> |
|--|--|

#### **August 2011 Forecasted Items**

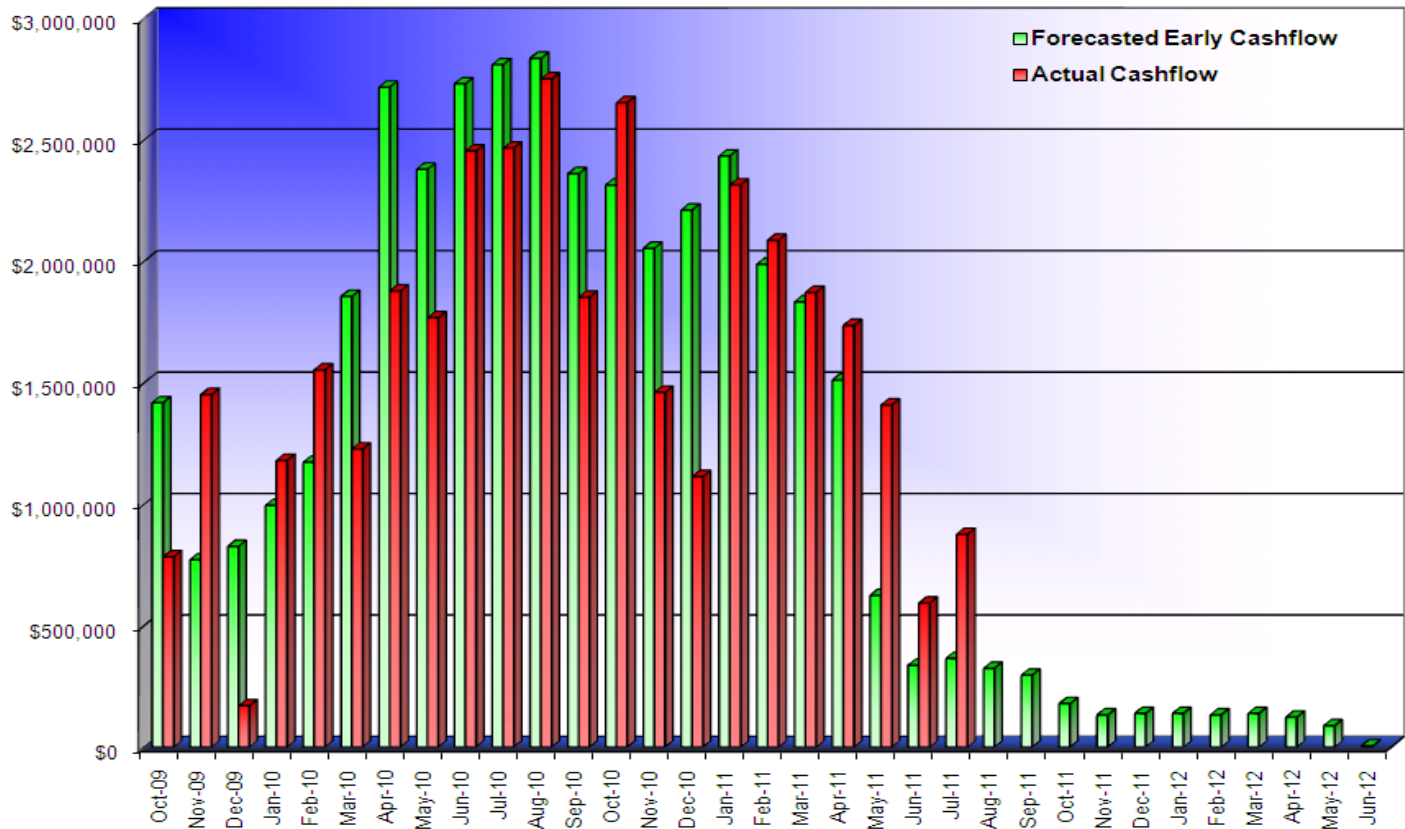
- |   |  |
|---|--|
| <ul style="list-style-type: none"> <li>• Complete Auditorium</li> <li>• Complete Gymnasium</li> <li>• Certificate of Occupancy</li> <li>• Complete Security</li> <li>• FFE Punch List</li> <li>• Start Photovoltaic System</li> </ul> | <ul style="list-style-type: none"> <li>• Building Final Punch Lists</li> <li>• ENO Projector Install</li> <li>• Complete Building IT Network</li> <li>• Install Telephone System</li> <li>• Abatement of Existing Building</li> <li>• Start Demo of Existing Building</li> </ul> |
|---|--|



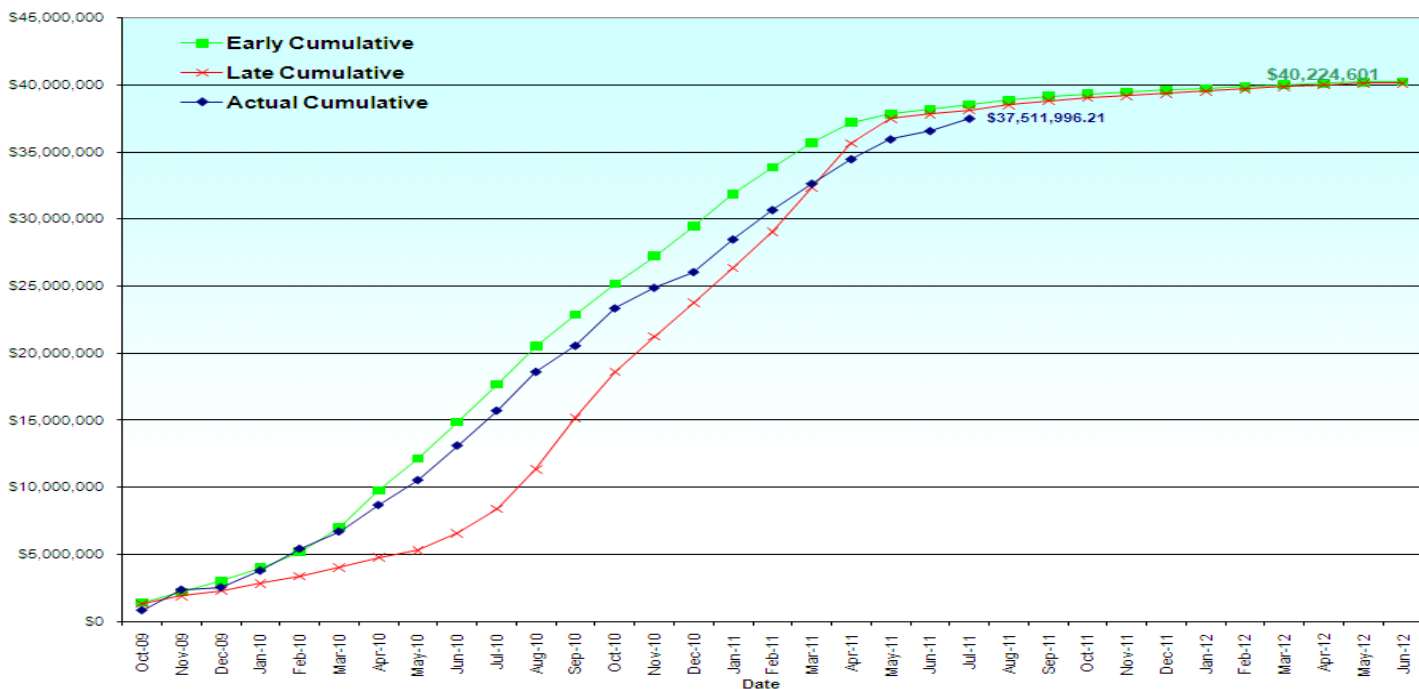
**Town of Hanover, Massachusetts**  
Hanover High School

**PMA Construction Services**  
Owner's Project Manager

### Monthly Cashflow Projection



### Cumulative Cashflow Projection



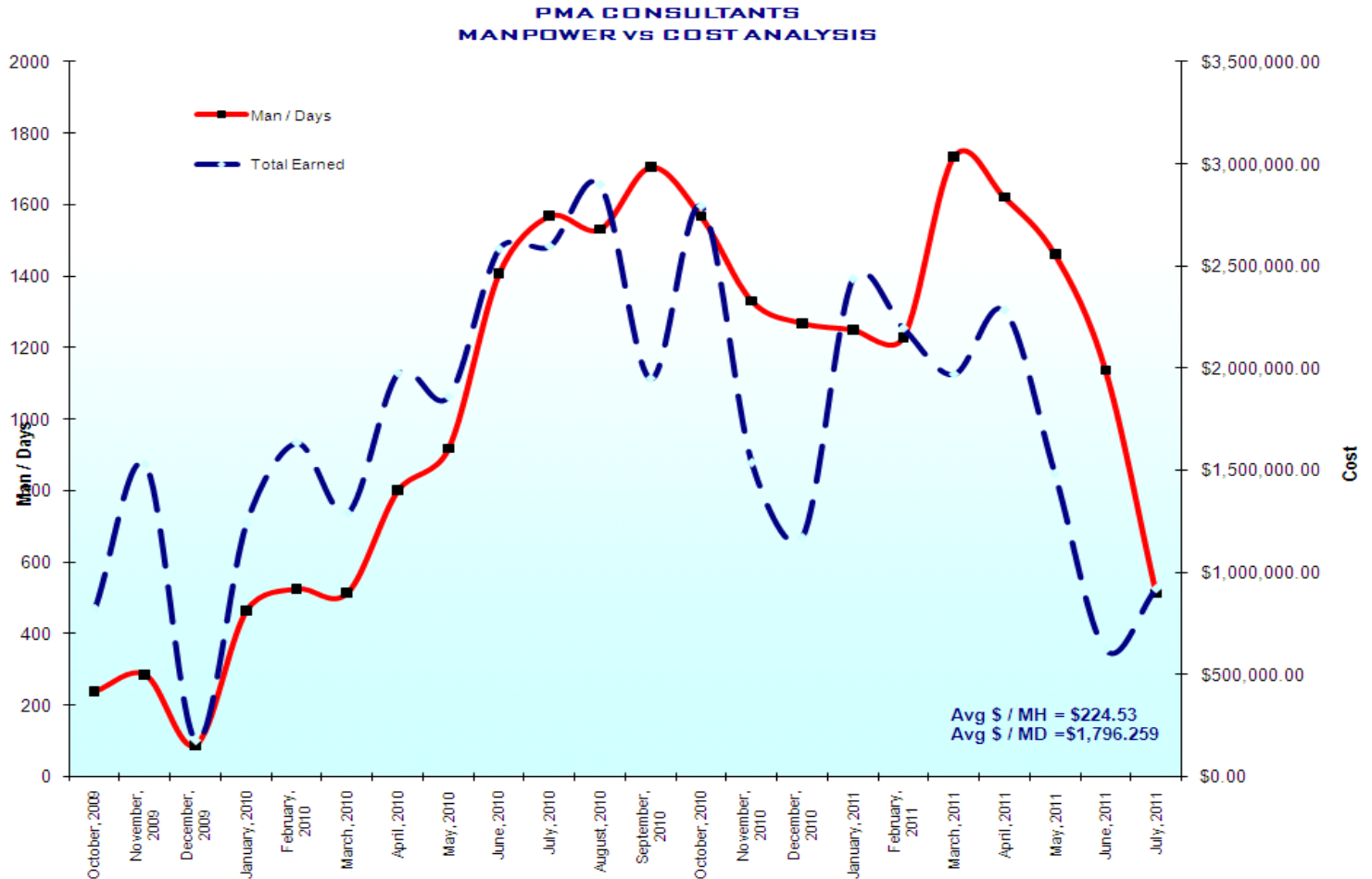


**Town of Hanover, Massachusetts**  
Hanover High School



**PMA Construction Services**  
Owner's Project Manager

### Manpower vs Cost Analysis



Milestone Dates				
Milestone Dates	Forecast	Actual	Status	Schedule Notes
Construction Start - NTP		28-Sep-09	✓	On Schedule
Start PHII		5-Jul-11	✓	On Schedule
Start Abatement		15-Jul-11	✓	On Schedule
Complete FF&E Install		29-Jul-11	✓	On Schedule
Receive Demo Permit	11-Aug-11			NGRID Delay Impacted
Complete Move Unpacking	12-Aug-11			On Schedule
Start Demo	15-Aug-11			On Schedule
Substantial Completion	15-Aug-11			Critical Path Impact, Working To Mitigate Impact on School Operations
Complete Auditorium	19-Aug-11			Acoustical Cloud Manufacturer Delay Impact
Complete Gymnasium	29-Aug-11			Critical Path Impact, Working To Mitigate Impact on School Operations

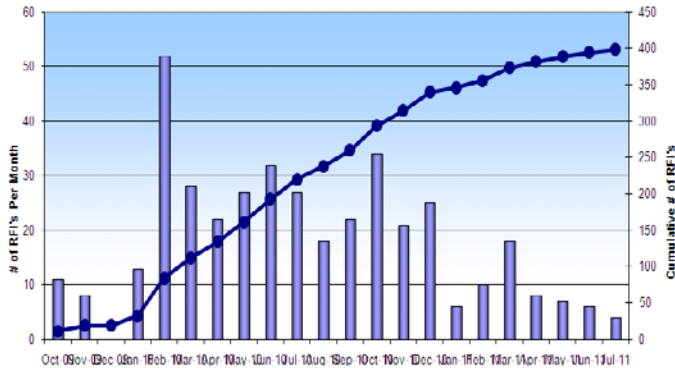


**Town of Hanover, Massachusetts**  
Hanover High School

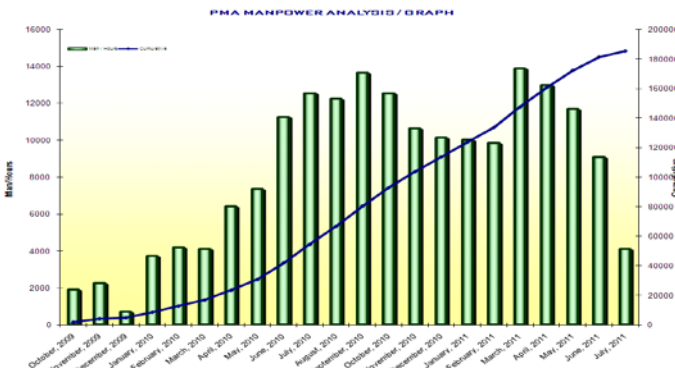
**PMA Construction Services**  
Owner's Project Manager

## Graphs & Data

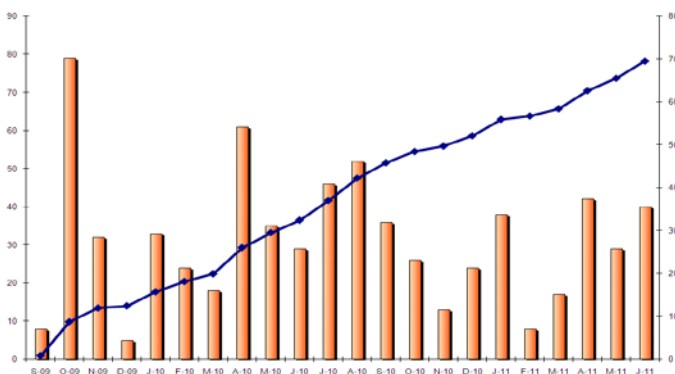
### Requests for Information (RFIs)



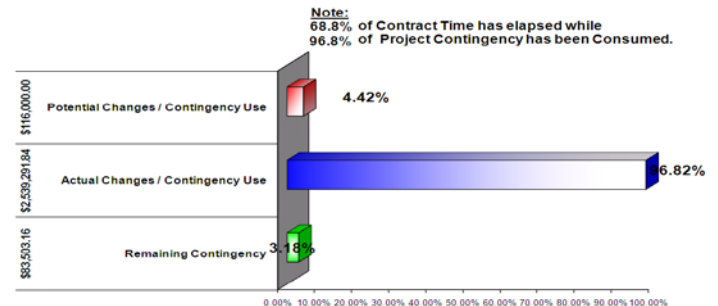
### Monthly Manpower



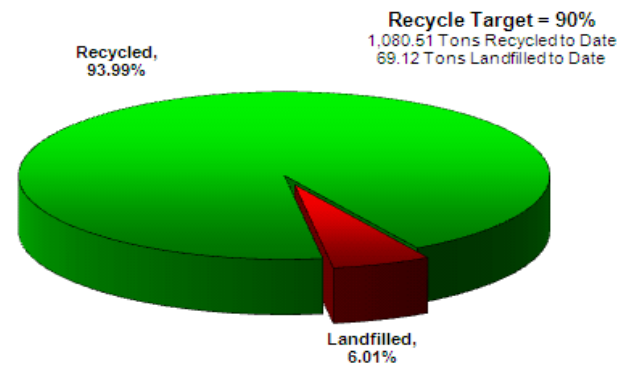
### Economic Impact – Work Force Employed To-Date



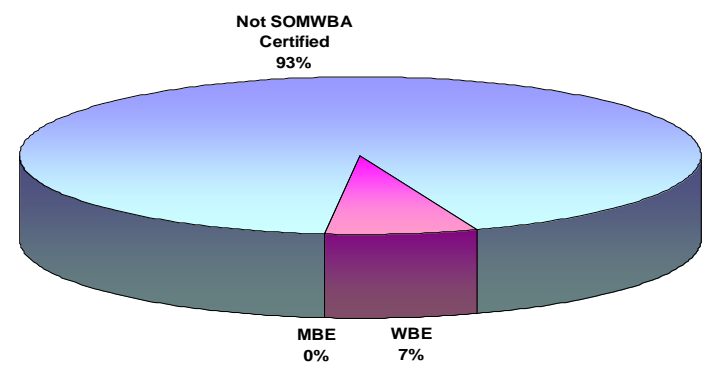
### Contingency Utilization



### MA-CHPS Waste Management



### MBE / WBE Participation



## PMA Change Management

	Received	Description	Proposed Amount (\$)	Pending Amount (\$)	Approved Amount (\$)	Time Extension (Y/N)	Current Status
	<b>Total</b>		<b>\$2,355,949.21</b>	<b>\$116,559.36</b>	<b>\$1,580,051.84</b>		
PCO #102	3/5/2011	Added Diffuser & Insulation per RFI#349	\$2,634.00	\$2,026.36		N	Open
PCO #107	4/14/2011	Bedrock Irrigation Well per ASI #23 and 33	\$31,494.00	\$31,494.00		N	Open
PCO #116	4/14/2011	Corridor A141 per RFI #379	\$4,018.00	\$4,018.00		N	Open
PCO #118	4/27/2011	Added Grills per RFI #266-1	\$1,552.00	\$1,552.00		N	Open
PCO #119	4/26/2011	Added Row of Snow Guards	\$4,385.00	\$4,385.00		N	Open
PCO #120	7/3/2011	Added Disconnects CCD #15	\$10,683.00	\$10,683.00		N	Open
PCO #130	6/4/2011	Misc Griffin	\$9,301.00	\$9,301.00		N	Open
PCO #131	6/20/2011	Café Light Fixture per ASI #87	\$4,534.00	\$4,534.00		N	Open
PCO #132	7/3/2011	Chilled Water Tank Insulation	\$2,360.00	\$2,360.00		N	Open
PCO #135	7/18/2011	Epoxy Floor at Maintenance per CCD #28	\$10,497.00	\$10,497.00		N	Open
PCO #136	7/24/2011	Misc Added Carpentry	\$6,978.00	\$6,978.00		N	Open
PCO #137	7/24/2011	Cut and Patch Auditorium per CCD #17	\$4,599.00	\$4,599.00		N	Open
PCO #56	10/29/2010	Existing Generator per RFI# 270	\$7,738.00	\$7,738.00		N	Open
PCO #87	1/22/2011	Tile Alignment & Transition	\$9,152.00	\$533.00		N	Open
PCO #89	7/3/2011	Pump Chamber	\$15,861.00	\$15,861.00		N	Open





**Town of Hanover, Massachusetts**  
Hanover High School

**PMA Construction Services**  
*Owner's Project Manager*

**Progress Photos**

**Existing High School Demo**



**Baseball Field**



**South Parking Lot Final Pave**



**ENO Board Display**



**South Architectural Feature Wall**



**Stage Construction**

