

# FAQs

**1. Where in the process is the School Building Needs Committee?**

The committee has worked with the MSBA (Massachusetts School Building Authority) to determine our needs and develop a plan. With MSBA approval, we have selected an Owner’s Project Manager and Architect. We have worked with the School Committee, Administration, High School staff, parents, students, and businesspeople to develop an educational plan and building to meet the future needs of Hanover. The Selectmen and Advisory Board have been consulted as progress has been made. We have developed the attached schedule, site plan and building schematics and will continue working over the next year to finalize building plans.

**2. Why is it necessary to vote on the project now? Why not wait.**

We have developed a project schedule to allow for the building to open in September of 2011. To achieve this schedule, we are required to enter into a project funding agreement with the MSBA committing Hanover to a project cost. Town approval is necessary prior to this step and waiting would only delay the opening of the building. These delays would increase the cost of the building dramatically.

**3. How did we decide on a new high school building?**

The committee worked on design plans for both new and renovation models. These designs and associated costs were presented to the Mass School Building Authority (MSBA) who oversees and approves all school projects. The MSBA supported and moved forward plans for a new High School.

**4. My children are grown and will not benefit from this building. Why should I support the project?**

This building is an important part of the infrastructure of Hanover, a community resource benefiting all age groups. As a state-of-the-art facility it will host a myriad of cultural, athletic and governmental activities.

**5. The Enrollment figure of 800 students seems low. Are we building enough space?**

The committee worked with the MSBA, HMFH Architects, Inc. and PMA Associates to develop a realistic enrollment to handle the needs of Hanover students. The MSBA has approved this number, which supports a building of 156,000 square feet, including the 48 teaching stations necessary to support our educational program.

**6. How much will the MSBA pay for and are there monies available for Hanover?**

Hanover has been given a base rate of 48.89%. Hanover will also qualify for a number of incentive points that have yet to be determined. Categories include innovative community use, energy efficiency, and maintenance rating with a potential for additional reimbursement. We are comfortable that our reimbursement rate will be at least 50% and Hanover is the first High School project approved to move forward through design. The state has \$2.5 billion for school projects and Hanover will be one of the first approved projects to receive funding. The MSBA is a partner on this project and will pay their share from the beginning.

**7. Will we take advantage of Green and energy savings products?**

The committee will consider the use of Green and energy savings technologies throughout the building. From natural light to Green products, we will implement fiscally responsible options for all systems and welcome residents input as the project progresses.

**8. What about the Center/Sylvester project that was discussed as a need?**

We presented two projects to the MSBA for consideration. The town of Hanover was asked to choose one and the School Committee and School Building Committee voted to move the High School project forward. We have since spent over \$1 million in repairs and upgrades to the Sylvester School and will consider this project in the future.

**9. How can I have input as the project progresses?**

All Hanover School Building Committee meetings are open to the public. Meetings are held at the Salmond School and dates are listed outside the Town Clerk’s office at Town Hall. We will maintain a website showing project developments at [www.hanoverschools.org/sbc](http://www.hanoverschools.org/sbc).

Hanover School  
Building  
Committee:

Chris Martin, Chair  
Dr. Kristine Nash, Superintendent of Schools  
Les Molyneaux, School Committee Liaison  
Steve Devine  
Kerry Harrison  
Al Kuhn

Edward Lee  
Jeanne McCloskey  
Paul Nimeskern  
James Hoey, Director of Facilities  
Dr. Thomas Rabb, H.S. Principal

# Hanover Schools Planning for the Future

**IMPORTANT INFORMATION:**  
**Sept. 8, 2008 - Your Town Meeting**  
**Sept. 16, 2008 - Ballot Vote**  
**Polls Open 6AM- 8PM**

Hanover School Building Committee  
Hanover Schools  
Hanover, MA 02339

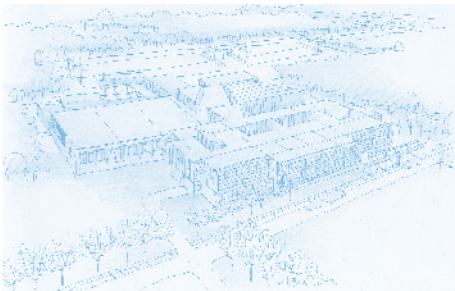
POSTAGE PAID  
Non-Profit  
Organization  
Permit No.4  
Hanover, MA 02339

**Postal Patron,  
Hanover, MA 02339**

Visit [www.hanoverschools.org/sbc](http://www.hanoverschools.org/sbc) for more information on the project  
Visit [www.hanover-ma.gov](http://www.hanover-ma.gov) for information on the 9/08 Town Meeting

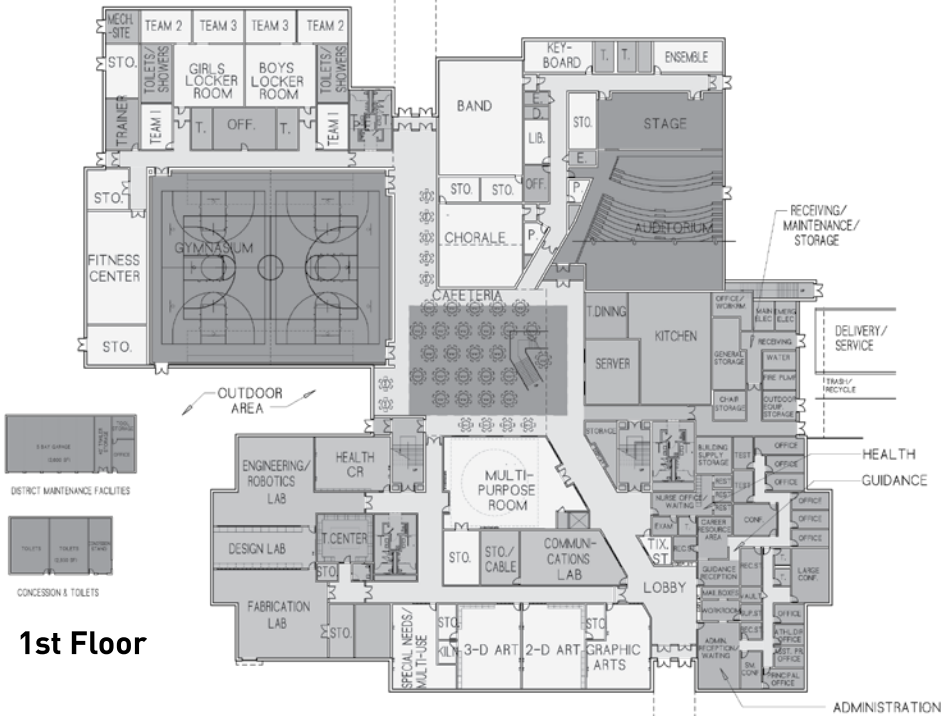
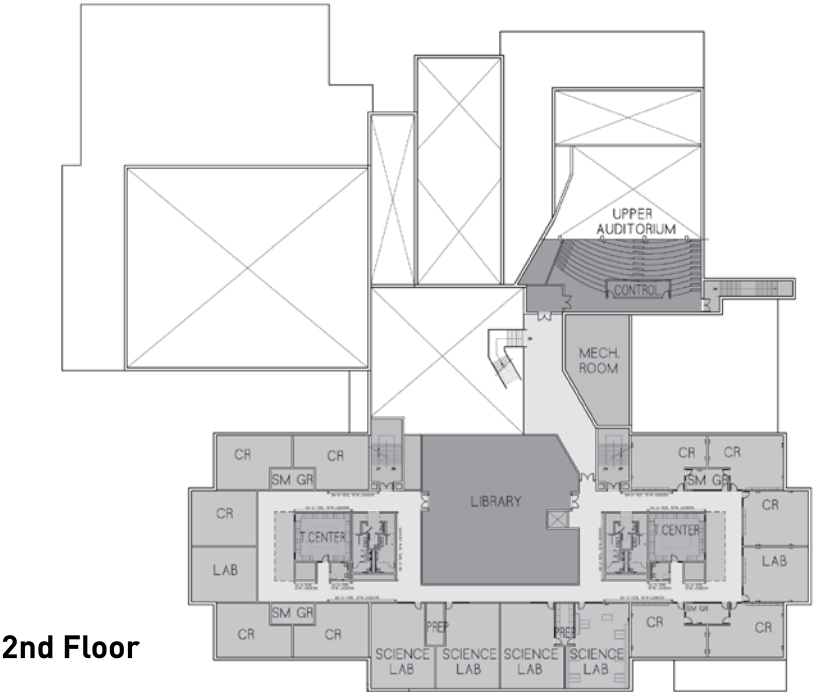
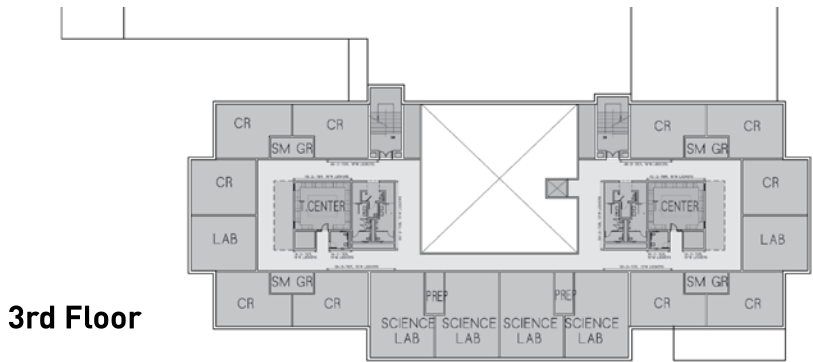


# Hanover Schools—Planning for the Future



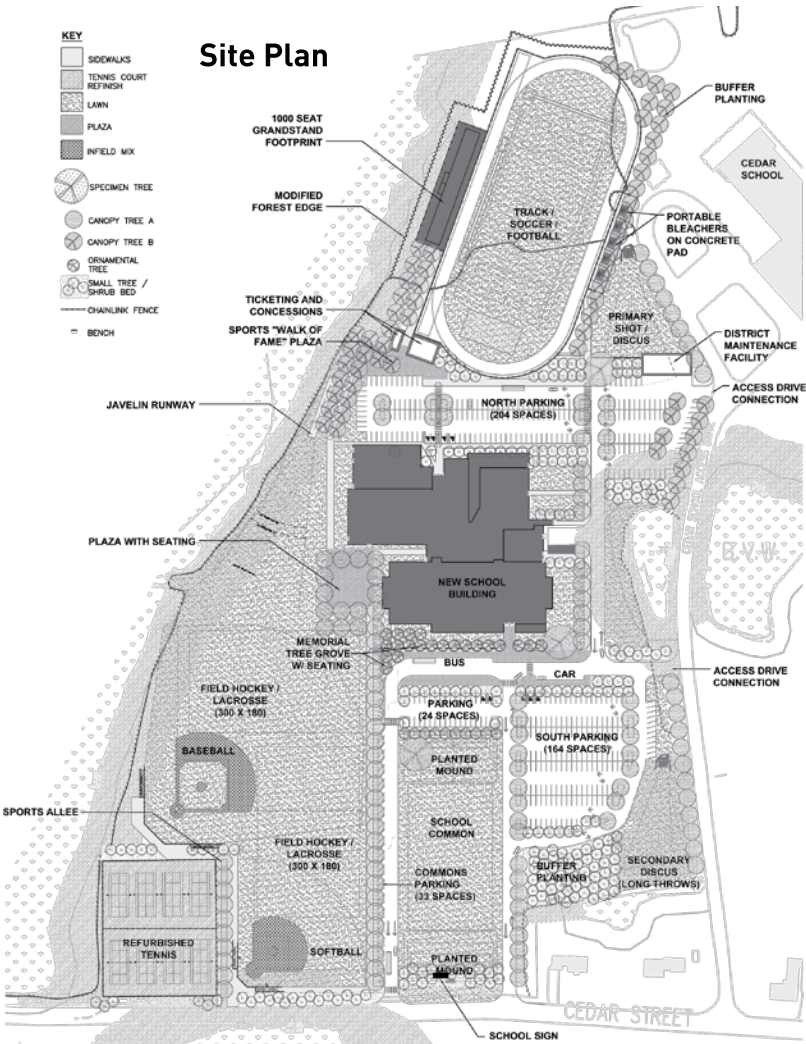
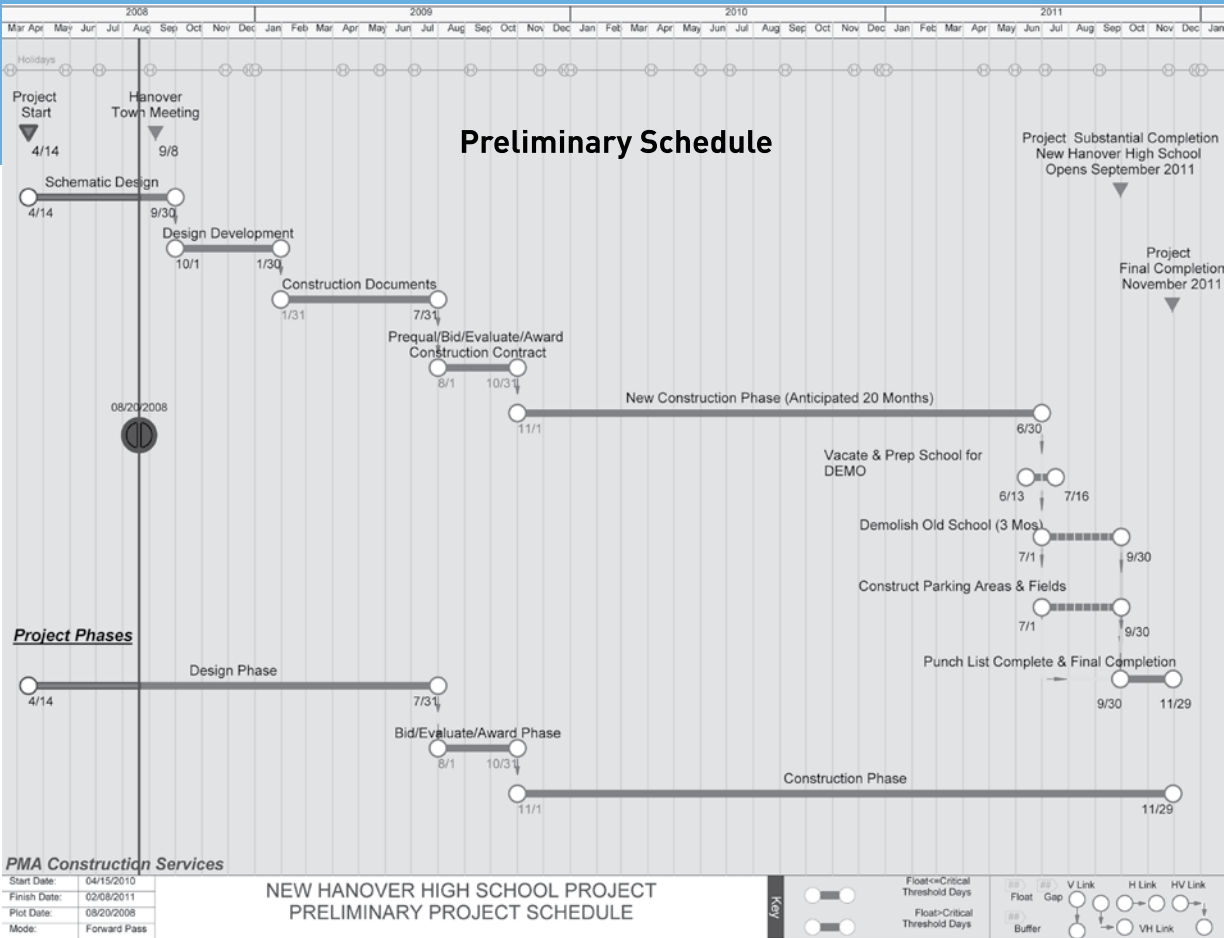
**Current Hanover High School**  
116,000 sq feet

**Proposed New High School**  
156,000 sq feet with  
48 teaching stations



- CORE/TECH
- SHARED
- ADMIN/FACULTY
- ART/MUSIC/PE/SP NEEDS
- SUPPORT/CIRCULATION

0 16 32 48 64 96



## The Cost/Tax Impact

The Massachusetts School Building Authority (MSBA) has approved Hanover for a 48.89% State-based reimbursement rate, with the possibility of being awarded additional incentive points. The total project is estimated to cost \$56-\$60M. The final cost and an itemized breakdown will be available at Town Meeting.

## Tax Implications

The project cost will use a pay-as-you-go reimbursement for the State share of the project, leaving Hanover with 50% of the cost. The tax impact to residents is estimated to be \$1 per thousand of the assessed value of your property and this assessment will not begin until June of 2010.